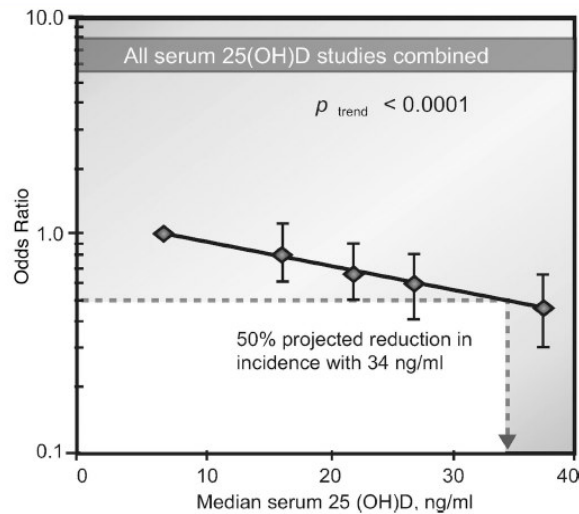
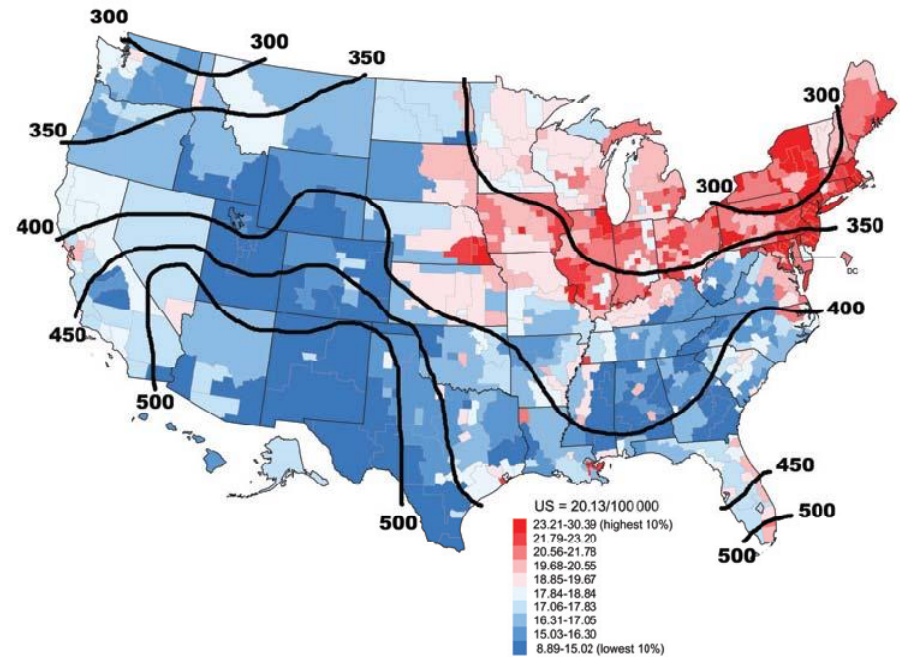


Viewing Breast Cancer as a Deficiency Disease

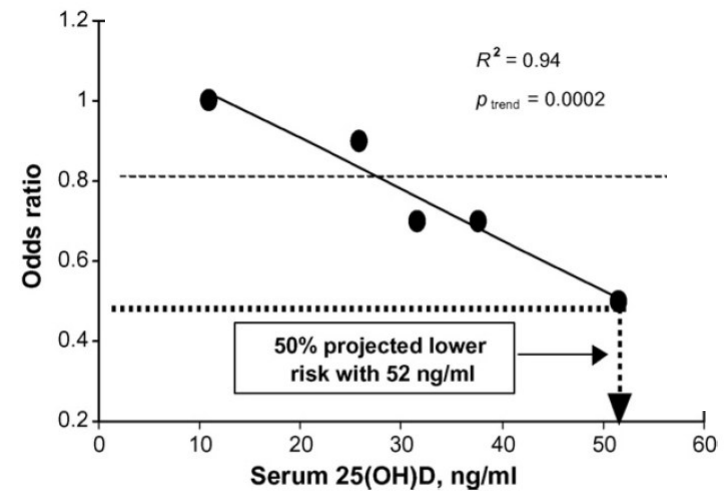
Cedric F. Garland, Dr.P.H., F.A.C.E.
 Professor, Department of Family and Preventive Medicine
 School of Medicine, University of California San Diego
 La Jolla, California USA cgarland@ucsd.edu

November 3, 2009

Diagnosis and Treatment of Vitamin D Deficiency
 University of Toronto Faculty Club



Dose-response gradient for colorectal cancer according to serum 25(OH)D concentration, all five studies combined. The five points are the odds ratios for each quintile of 25(OH)D based on combined data from the five studies. Source: Gorham ED, et al. Optimal vitamin D status for colorectal cancer prevention: A Quantitative Meta Analysis. Am J Prev Med March 2007; 32:210-6.

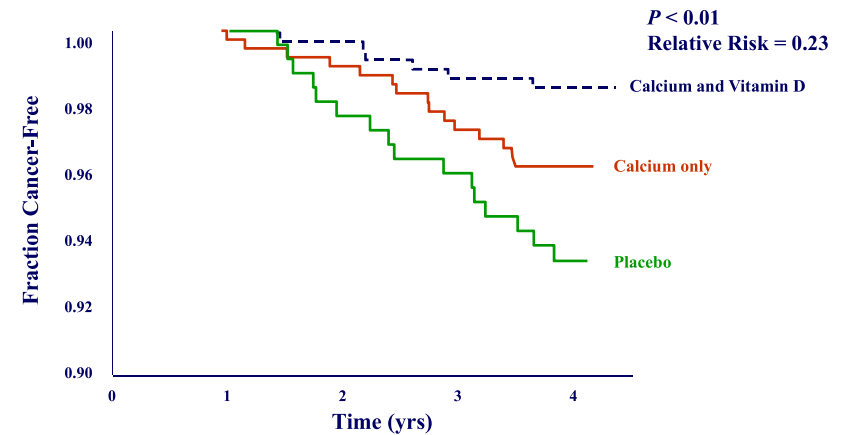


Dose-response gradient of risk of breast cancer according to serum 25-hydroxyvitamin D concentration, pooled analysis

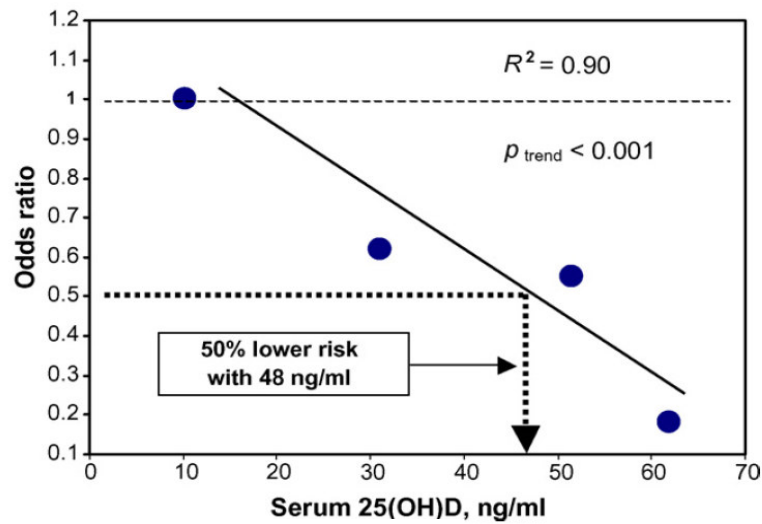
Source: Garland CF, et al. Vitamin D and prevention of breast cancer: Pooled analysis, J Steroid Biochem Mol Biol. 2007;103:708-11



All Except First Year Cases

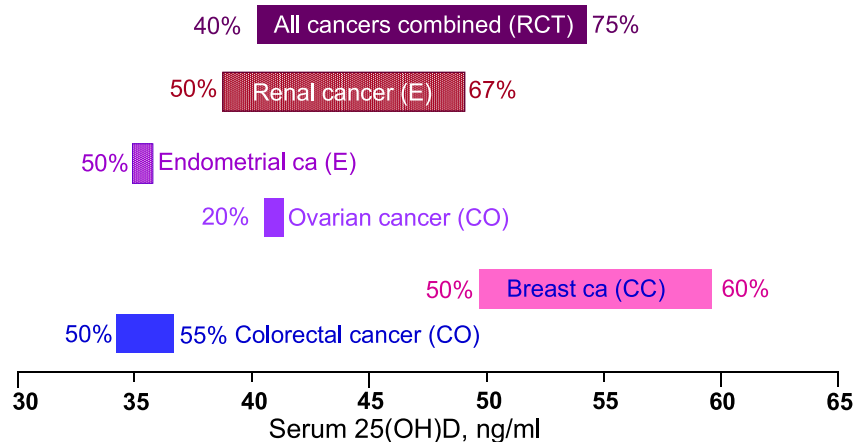


Source: Lappe JM, Travers-Gustafson D, Davies KM, Recker RR, Heaney RP. Vitamin D and calcium supplementation reduces cancer risk: results of a randomized trial. *Am J Clin Nutr.* 2007;85:1586-91.



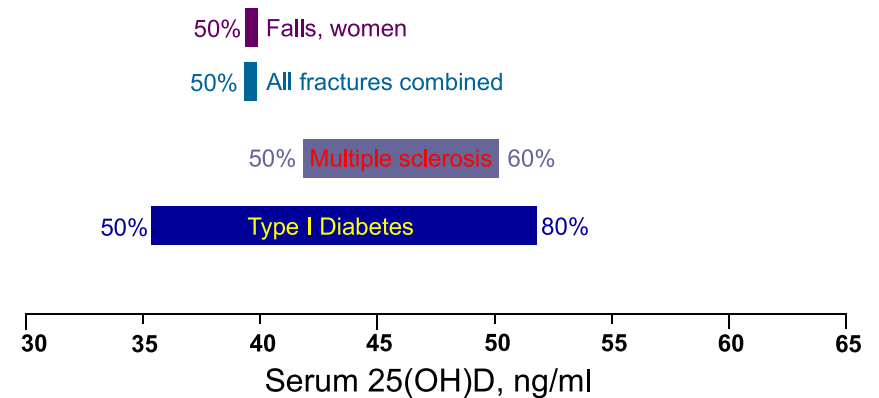
Dose-response gradient of risk of breast cancer according to serum 25-hydroxyvitamin D concentration, St. George's Hospital, London
Data from: Lowe LC, et al. Plasma 25-hydroxy vitamin D concentrations, vitamin D receptor genotype and breast cancer risk in a UK Caucasian population. *Eur J Cancer.* 2005;41:1164-9.

Estimated Approximate Proportion of Preventable Cancers



Gorham ED, et al. *Am J Prev Med.* 2007;32:210-6.
Garland CF, et al. *Am Assoc Ca Res Mtg San Diego* April 14, 2008
Li H, et al. *PLoS Med.* 2007;4:103.
Tworoger SS, et al. *Cancer Epidemiol Biomarkers Prev.* 2007;16:783-8.
Mohr SB, et al. *Prev Med.* 2007;45:323-4.
Mohr SB, et al. *Int J Cancer.* 2006;119:2705-9.
Purdue MP, et al. *Cancer Causes Control.* 2007;18:989-99.
Lappe JM, et al. *Am J Clin Nutr.* 2007;85:1586-91.

Estimated Proportion of other Conditions Preventable by Specified Range of Serum 25(OH) D Level



Hyppönen E, et al. *Lancet* 2001;358:1500-3.
Munger KL, et al. *JAMA.* 2006;296:2832-8.
Bischoff-Ferrari HA, et al. *JAMA.* 2005;293:2257-64.
Broe KE, et al. *J Am Geriatr Soc.* 2007;55:234-9.