

A Collaborative Analysis of Individual Participant Data from 19 Prospective Studies Assesses Circulating Vitamin D and Prostate Cancer Risk



Ruth C. Travis¹, Aurora Perez-Cornago¹, Paul N. Appleby¹, Demetrius Albanes², Corinne E. Joshi³, Pamela L. Lutsey⁴, Alison M. Mondul⁵, Elizabeth A. Platz³, Stephanie J. Weinstein², Tracy M. Layne², Kathy J. Helzlsouer³, Kala Visvanathan³, Domenico Palli⁶, Petra H. Peeters⁷, Bas Bueno-de-Mesquita^{8,9,10,11}, Antonia Trichopoulou¹², Marc J. Gunter¹³, Konstantinos K. Tsilidis^{10,14}, Maria-Jose Sánchez^{15,16}, Anja Olsen¹⁷, Hermann Brenner^{18,19,20}, Ben Schöttker^{18,21}, Laura Perna¹⁸, Bernd Holleczeck²², Paul Knekt²³, Harri Rissanen²³, Bu B. Yeap^{24,25}, Leon Flicker^{24,26,27}, Osvaldo P. Almeida^{24,26,28}, Yuen Yee Elizabeth Wong^{24,29}, June M. Chan³⁰, Edward L. Giovannucci³¹, Meir J. Stampfer³¹, Giske Ursin³², Randi E. Gislefoss³², Tone Bjørge^{32,33}, Haakon E. Meyer^{34,35}, Rune Blomhoff^{36,37}, Shoichiro Tsugane³⁸, Norie Sawada³⁸, Dallas R. English^{39,40}, Darryl W. Eyles⁴¹, Alicia K. Heath¹⁰, Elizabeth J. Williamson⁴², Jonas Manjer⁴³, Johan Malm⁴³, Martin Almquist⁴⁴, Loïc Le Marchand⁴⁵, Christopher A. Haiman⁴⁶, Lynne R. Wilkens⁴⁷, Jeannette M. Schenk⁴⁸, Cathy M. Tangen^{49,50}, Amanda Black², Michael B. Cook², Wen-Yi Huang², Regina G. Ziegler², Richard M. Martin^{51,52,53}, Freddie C. Hamdy⁵⁴, Jenny L. Donovan⁵¹, David E. Neal⁵⁴, Mathilde Touvier⁵⁵, Serge Hercberg⁵⁵, Pilar Galan⁵⁵, Mélanie Deschasaux⁵⁵, Timothy J. Key¹, and Naomi E. Allen⁵⁶

Abstract

Previous prospective studies assessing the relationship between circulating concentrations of vitamin D and prostate cancer risk have shown inconclusive results, particularly for risk of aggressive disease. In this study, we examine the association between prediagnostic concentrations of 25-hydroxyvitamin D [25(OH)D] and 1,25-dihydroxyvitamin D [1,25(OH)₂D] and the risk of prostate cancer overall and by tumor characteristics. Principal investigators of 19 prospective studies provided individual participant data on circulating 25(OH)D and 1,25(OH)₂D for up to 13,462 men with incident prostate cancer and 20,261 control participants. ORs for prostate cancer by study-specific fifths of season-standardized vitamin D concentration were estimated using multivariable-adjusted conditional logistic regression. 25(OH)D concentration was positively associated with risk for total prostate cancer (multivariable-adjusted OR comparing highest vs. lowest study-specific fifth was 1.22; 95% confidence interval, 1.13–1.31; *P* trend < 0.001). However, this association varied by disease

aggressiveness ($P_{\text{heterogeneity}} = 0.014$); higher circulating 25(OH)D was associated with a higher risk of nonaggressive disease (OR per 80 percentile increase = 1.24, 1.13–1.36) but not with aggressive disease (defined as stage 4, metastases, or prostate cancer death, 0.95, 0.78–1.15). 1,25(OH)₂D concentration was not associated with risk for prostate cancer overall or by tumor characteristics. The absence of an association of vitamin D with aggressive disease does not support the hypothesis that vitamin D deficiency increases prostate cancer risk. Rather, the association of high circulating 25(OH)D concentration with a higher risk of nonaggressive prostate cancer may be influenced by detection bias.

Significance: This international collaboration comprises the largest prospective study on blood vitamin D and prostate cancer risk and shows no association with aggressive disease but some evidence of a higher risk of nonaggressive disease.

¹Cancer Epidemiology Unit, Nuffield Department of Population Health, University of Oxford, Oxford, United Kingdom. ²Division of Cancer Epidemiology and Genetics, U.S. National Cancer Institute, Bethesda, Maryland. ³Department of Epidemiology, Johns Hopkins Bloomberg School of Public Health, Baltimore, Maryland. ⁴Division of Epidemiology and Community Health, University of Minnesota, Minneapolis, Minnesota. ⁵Department of Epidemiology, School of Public Health, University of Michigan, Ann Arbor, Michigan. ⁶Cancer Risk Factors and Life-Style Epidemiology Unit, Institute for Cancer Research, Prevention and Clinical Network - ISPRO, Florence, Italy. ⁷Julius Center for Health Sciences and Primary Care, University Medical Center Utrecht, Utrecht University, Utrecht, the

Netherlands. ⁸Department for Determinants of Chronic Diseases (DCD), National Institute for Public Health and the Environment (RIVM), BA Bilthoven, the Netherlands. ⁹Department of Gastroenterology and Hepatology, University Medical Centre, Utrecht, the Netherlands. ¹⁰Department of Epidemiology and Biostatistics, School of Public Health, Imperial College London, United Kingdom. ¹¹Department of Social and Preventive Medicine, Faculty of Medicine, University of Malaya, Pantai Valley, Kuala Lumpur, Malaysia. ¹²Hellenic Health Foundation, Athens, Greece. ¹³Section of Nutrition and Metabolism, International Agency for Research on Cancer, Lyon, France. ¹⁴Department of Hygiene and Epidemiology, University of Ioannina School of Medicine, Ioannina, Greece. ¹⁵Escuela Andaluza

Introduction

It has been hypothesized that vitamin D deficiency may increase prostate cancer risk (1, 2). A meta-analysis of 6 prospective studies published up to 2010 reported that circulating vitamin D concentrations were not related to prostate cancer risk (3); however, it was insufficiently powered to provide robust estimates of risk, especially for important disease subgroups. Although the active hormonal form of vitamin D is 1,25-dihydroxyvitamin D [1,25(OH)₂D], which is mainly formed by hydroxylation of 25-hydroxyvitamin D [25(OH)D] in the kidney under the control of parathyroid hormone, circulating 25(OH)D concentration is regarded as the most informative indicator of vitamin D status.

The Endogenous Hormones, Nutritional Biomarkers and Prostate Cancer Collaborative Group was established to conduct collaborative reanalysis of individual data from prospective studies on the relationships of circulating hormone concentrations and nutritional biomarkers with prostate cancer risk (4, 5). With pooled individual participant data on prediagnostic circulating 25(OH)D and 1,25(OH)₂D concentrations from 19 prospective studies (with up to 13,462 men with incident prostate cancer), this analysis aimed to provide precise estimates of the association of circulating vitamin D with prostate cancer risk and to investigate whether these associations differed by tumor characteristics or time from blood collection to diagnosis. We also examined the cross-sectional relationships between lifestyle factors and vitamin D concentrations.

Materials and Methods

Data collection

Published and unpublished studies were eligible for the current analysis if they had data on prediagnostic circulating concentrations of 25(OH)D or 1,25(OH)₂D and incident prostate cancers. Studies were identified using literature search methods from computerized bibliographic systems and by discussion with collaborators, as described previously (4, 5). Data were available for 19 prospective studies by dataset closure in May 2018.

Individual participant data were requested on circulating 25(OH)D and 1,25(OH)₂D, date, age, and fasting status at sample collection, marital status, ethnicity, educational attainment, family history of prostate cancer, height, weight, waist and hip circumference, smoking status, alcohol intake, and vital status. Each study also provided data on prostate cancer stage and grade and death, if available, and the data were harmonized in a central database. Further details on data collection and processing are provided in the Supplementary Methods.

Study designs and data processing

The characteristics of the included studies are shown in Supplementary Table S1, and details of the assay methods are shown in Supplementary Table S2. Most of the studies were case-control studies nested within prospective cohort studies. Data on the control participants from The Prostate Testing for Cancer and Treatment (ProtecT) trial are included in cross-sectional analyses of vitamin D concentrations in relation to participant characteristics, but because cases were diagnosed at the start of the study

de Salud Pública, Instituto de Investigación Biosanitaria IBS. Granada, Hospitales Universitarios de Granada/Universidad de Granada, Granada, Spain.¹⁶CIBER de Epidemiología y Salud Pública (CIBERESP), Madrid, Spain.¹⁷Danish Cancer Society Research Center, Copenhagen, Denmark.¹⁸Division of Clinical Epidemiology and Aging Research, German Cancer Research Center, Heidelberg, Germany.¹⁹Division of Preventive Oncology, German Cancer Research Center (DKFZ) and National Center for Tumor Diseases (NCT), Heidelberg, Germany.²⁰German Cancer Consortium (DKTK), German Cancer Research Center (DKFZ), Heidelberg, Germany.²¹Network Aging Research, University of Heidelberg, Heidelberg, Germany.²²Saarland Cancer Registry, Saarbrücken, Germany.²³National Institute for Health and Welfare, Helsinki, Finland.²⁴The Medical School, University of Western Australia, Perth, Australia.²⁵Department of Endocrinology and Diabetes, Fiona Stanley Hospital, Perth, Australia.²⁶Western Australian Centre for Health and Ageing, Centre for Medical Research, Harry Perkins Institute of Medical Research, Perth, Australia.²⁷Department of Geriatric Medicine, Royal Perth Hospital, Perth, Australia.²⁸Department of Psychiatry, Royal Perth Hospital, Perth, Australia.²⁹Department of Geriatric Medicine, Fiona Stanley and Fremantle Hospitals Group, Perth, Australia.³⁰Departments of Epidemiology and Biostatistics and Urology, University of California, San Francisco, San Francisco, California.³¹Departments of Nutrition and Epidemiology, Harvard T.H. Chan School of Public Health, Boston, Massachusetts.³²Cancer Registry of Norway, Institute of Population-Based Cancer Research, Oslo, Norway.³³Department of Global Public Health and Primary Care, University of Bergen, Bergen, Norway.³⁴Department of Community Medicine and Global Health, University of Oslo, Oslo, Norway.³⁵Division of Mental and Physical Health, Norwegian Institute of Public Health, Oslo, Norway.³⁶Department of Nutrition, Institute of Basic Medical Sciences, University of Oslo, Oslo, Norway.³⁷Division of Cancer Medicine, Department of Clinical Service, Oslo University Hospital, Oslo, Norway.³⁸Epidemiology and Prevention Group, Center for Public Health Sciences, National Cancer Center, Tokyo, Japan.³⁹Cancer Epidemiology and Intelligence Division, Cancer Council Victoria, Melbourne, Victoria, Australia.⁴⁰Centre for Epidemiology and Biostatistics, Melbourne School of Population and Global Health, The University of Melbourne, Melbourne, Victoria, Australia.⁴¹Queensland Brain Institute, University of Queensland, Queensland, Australia.

⁴²Department of Medical Statistics, London School of Hygiene and Tropical Medicine, London, United Kingdom.⁴³Department of Translational Medicine, Clinical Chemistry, Lund University, Skåne University Hospital, Malmö, Sweden.⁴⁴Department of Surgery, Endocrine-Sarcoma Unit, Skåne University Hospital, Lund, Sweden.⁴⁵Epidemiology Program, University of Hawaii Cancer Center, Honolulu, Hawaii.⁴⁶Keck School of Medicine, University of Southern California, Los Angeles, California.⁴⁷Epidemiology Program, University of Hawaii Cancer Center, Honolulu, Hawaii.⁴⁸Cancer Prevention Program, Public Health Sciences Division, Fred Hutchinson Cancer Research Centre, Seattle, Washington.⁴⁹SWOG (Formerly the Southwest Oncology Group) Statistical Center, Fred Hutchinson Cancer Research Center, Seattle, Washington.⁵⁰Department of Biostatistics, University of Washington, Seattle, Washington.⁵¹Bristol Medical School Department of Population Health Sciences, University of Bristol, Bristol, United Kingdom.⁵²Medical Research Council (MRC) University of Bristol Integrative Epidemiology Unit (IEU), University of Bristol, Bristol, United Kingdom.⁵³National Institute for Health Research, Bristol Biomedical Research Centre, Bristol, United Kingdom.⁵⁴Nuffield Department of Surgery, University of Oxford, Oxford, United Kingdom.⁵⁵Sorbonne Paris Cité Epidemiology and Statistics Research Center (CRESS), Nutritional Epidemiology Research Team (EREN), Inserm U1153/Inra U1125/Cnam/Paris 13 University, Bobigny, France.⁵⁶Clinical Trial Service Unit and Epidemiological Studies Unit, Nuffield Department of Population Health, University of Oxford, Oxford, United Kingdom.

Note: Supplementary data for this article are available at Cancer Research Online (<http://cancerres.aacrjournals.org/>).

R.C. Travis and A. Perez-Cornago are joint first authors.

T.J. Key and N.E. Allen are joint senior authors.

Corresponding Author: Aurora Perez-Cornago, University of Oxford, Oxford OX371F, United Kingdom. Phone: 44(0)1865-289600; E-mail: aurora.perez-cornago@ndph.ox.ac.uk

doi: 10.1158/0008-5472.CAN-18-2318

©2018 American Association for Cancer Research.

Travis et al.

rather than during follow-up, these data were not included in the main risk analyses. Written-informed consent was obtained from study participants at entry into each cohort or was implied by participants' return of the enrolment questionnaire. The study protocols were approved by Institutional Review Boards of each study center.

Prostate cancer was defined as being "early" stage if it was tumor-node-metastasis (TNM) stage T1 with no reported lymph node involvement or metastases, or stage I; "other localized" stage if it was TNM stage T2 with no reported lymph node involvement or metastases, stage II, or the equivalent; "advanced" stage if it was TNM stage T3 or T4 and/or N1+ and/or M1, stage III-IV, or the equivalent; or stage unknown. Aggressive disease was categorized as "no" for TNM stage T0, T1, T2, or T3 with no reported lymph node involvement and no metastases or equivalent, "yes" for TNM stage T4 and/or N1+ and/or M1 and/or stage IV disease and/or death from prostate cancer, or "unknown." Histologic grade was defined as "low-intermediate" if the Gleason sum was < 8 or equivalent, "high" grade if the Gleason sum was \geq 8 or equivalent, or grade "unknown." Fatal cases were men who died of prostate cancer during follow-up.

Statistical analyses

25(OH)D and 1,25(OH)₂D concentrations were log-transformed to approximate a normal distribution for parametric analyses. To allow for the influence of month of blood draw on circulating concentrations, a regression model of log-transformed vitamin D concentration by month of blood collection was fitted for each study. All results are presented by season-standardized vitamin D, unless otherwise specified.

The main method of analysis was logistic regression conditioned on the matching variables within each study. Men were categorized into fifths of the distribution of 25(OH)D and 1,25(OH)₂D, with cut-points defined by the study-specific quintiles of the distribution within control participants, to allow for any systematic differences between the studies in assay methods and blood sample types (6). Linear trends were calculated by replacing the categorical variable representing the fifths of each analyte with a continuous variable that was scored as 0, 0.25, 0.5, 0.75, and 1; a unit increase in this variable can be taken to represent an 80 percentile increase in the study-specific concentration of vitamin D. To examine the effects of potential confounders (other than the matching criteria, which were taken into account in the study design and matched analyses), conditional logistic regression analyses included the following covariates: age at blood collection, body mass index (BMI), height, marital status, educational status, and cigarette smoking, all of which were associated with prostate cancer risk in these analyses.

In a sensitivity analysis, conditional logistic regression models were also fitted using quintile cut-points defined by the overall distribution among the control participants in all studies combined. The analyses were also repeated using predefined categories for concentrations of 25(OH)D of <30, 30- $<$ 50, 50- $<$ 75, and \geq 75 nmol/L, in order to investigate risks associated with very low (deficiency), low (insufficiency), moderate (sufficiency), and high circulating concentrations of vitamin D based on the Institute of Medicine recommendations (7).

For each analyte, heterogeneity in linear trends between studies was assessed by comparing the χ^2 values for models with and without a (study) \times (linear trend) interaction term. Tests for heterogeneity for the case-defined factors were obtained by fitting

separate models for each subgroup and assuming independence of the ORs using a method analogous to a meta-analysis, in which controls in each matched set were assigned to the category of their matched case. Tests for heterogeneity for noncase defined factors were assessed with χ^2 tests of interaction between subgroups and the binary variable.

In order to assess potential effect modification with different biomarkers, a χ^2 test of interaction was used to determine whether risks by study-specific thirds of 25(OH)D varied according to study-specific thirds of 1,25(OH)₂D (and vice versa), and according to study-specific thirds of circulating concentrations of insulin-like growth factor-I (IGF)-I, IGF binding protein-3 (IGFBP3), testosterone, free testosterone, sex hormone-binding globulin (SHBG), and prostate-specific antigen (PSA), where these data were available.

The cross-sectional associations of 25(OH)D and 1,25(OH)₂D with participant characteristics (among controls only) were examined using analyses of variance to calculate geometric mean concentrations and 95% confidence intervals (CI), adjusting for study and age at blood collection, as appropriate.

All tests of statistical significance were two-sided, and statistical significance was set at the 5% level. All statistical tests were carried out with Stata Statistical Software, Release 14 (StataCorp, LP). Full details of the statistical analyses are provided in the Supplementary Methods.

Results

Details of the 19 participating studies are shown in Table 1. Data on 25(OH)D concentrations were available for 13,462 men who subsequently developed prostate cancer and 20,261 control participants, and for 1,25(OH)₂D concentrations for 1,885 case and 2,114 control participants. Mean age at blood collection across the studies ranged from 46.5 (SD = 4.2) to 76.3 (3.6) years. Blood collection preceded prostate cancer diagnosis by an average of 8.5 years (SD = 6.0 years), although there was a wide variation among the studies (Table 2). On average, cases were 67.5 years old (SD = 7.3 years) at diagnosis, and most (87.1%) were diagnosed after 1994. The majority of cases with information on stage and grade of disease had localized (early or other localized) disease (ranging from 47.8% to 99.0% of case patients across studies) and low-intermediate grade tumors (ranging from 75.8% to 100% of case patients). Concentrations of 25(OH)D and 1,25(OH)₂D varied significantly by month among both the cases and controls (Supplementary Fig. S1).

Associations between circulating vitamin D concentrations and prostate cancer risk

25(OH)D concentration was linearly positively associated with risk for total prostate cancer (Fig. 1); the multivariate-OR for prostate cancer for men in the highest compared with the lowest study-specific fifth was 1.22 (95% CI, 1.13-1.31; *P* trend < 0.001). The association was similar when only the matching factors were taken into account (Supplementary Fig. S2), and there was no evidence of heterogeneity between the contributing studies (Fig. 2A). When 25(OH)D was categorized into study-specific tenths, the OR for the highest versus the lowest tenth was 1.34 (1.20 to 1.49; *P* trend < 0.001; Supplementary Table S3).

There was no evidence of an association between 1,25(OH)₂D concentration and risk for total prostate cancer (see Figs. 1

Table 1. Participant characteristics by study and case-control status^a

Prospective studies (reference)	Case-control status	Number	Age at recruitment (y)	BMI (kg/m ²)	Married or cohabiting (%) ^b	Higher education (%) ^b	Current smoker (%) ^b	Intake of alcohol (g/d)	Family history of prostate cancer (%) ^b	Geometric mean concentration (95% CI) 25(OH)D ^c (nmol/L)	Geometric mean concentration (95% CI) 1,25(OH) ₂ D ^c (pmol/L)
ARIC (Unpublished) ^d	Case	700	55.4 (5.7)	27.5 (4.0)	88.3	17.9	20.6	9.1 (15.9)	13.3	60.1 (58.6-61.7)	—
	Control	2,752	55.2 (5.7)	27.5 (4.2)	85.8	11.6	26.9	9.9 (18.3)	6.2	59.7 (58.8-60.5)	—
ATBC (24)	Case	996	58.4 (5.2)	26.3 (3.6)	82.5	6.1	100	17.3 (23.2)	7.3	32.6 (31.4-33.8)	—
	Control	996	58.4 (5.1)	26.1 (3.7)	81.4	4.3	100	15.4 (19.5)	3.5	31.4 (30.2-32.6)	—
CLUE 1 (25)	Case	61	58.3 (8.5)	—	91.8	11.5	29.5	—	—	82.1 (76.3-88.2)	94 (87-102)
	Control	122	58.3 (8.5)	—	86.9	9.8	25.4	—	—	79.0 (74.7-83.4)	91 (85-97)
EPIC (26)	Case	652	60.4 (6.3)	26.7 (3.4)	88.8	24.9	20.3	19.1 (23.9)	—	53.8 (52.3-55.3)	—
	Control	752	59.9 (6.3)	26.8 (3.5)	88.6	19.8	22.6	17.0 (19.9)	—	53.2 (51.8-54.7)	—
ESTHER (27)	Case	216	64.3 (5.1)	27.3 (3.1)	83.9	—	13.9	16.6 (19.7)	5.1	55.3 (51.7-59.1)	—
	Control	841	64.3 (5.1)	28.0 (4.2)	84.6	—	14.6	14.2 (15.3)	3.8	54.2 (52.6-55.8)	—
FMC (Unpublished) ^d	Case	161	57.9 (10.4)	25.8 (3.1)	90.6	—	29.0	—	—	51.5 (47.6-55.6)	—
	Control	286	57.2 (10.4)	26.1 (3.6)	85.0	—	34.9	—	—	50.4 (47.8-53.0)	—
HIMS (28)	Case	332	76.4 (3.7)	26.4 (3.5)	86.7	22.9	4.5	11.7 (15.5)	—	66.8 (64.5-69.2)	—
	Control	1,317	76.3 (3.6)	26.5 (3.7)	86.2	21.7	4.6	11.8 (16.1)	—	64.3 (63.1-65.5)	—
HPFS (29-31)	Case	1,326	63.8 (7.8)	26.0 (3.3)	92.7	100	4.4	11.8 (15.4)	14.4	68.1 (66.5-69.7)	83 (81-86)
	Control	1,326	63.7 (7.8)	26.1 (3.5)	93.0	100	3.5	11.6 (15.8)	10.6	66.2 (64.4-68.0)	83 (81-85)
Janus part 1 (32)	Case	575	46.5 (4.3)	25.4 (3.1)	—	—	60.6	—	—	52.1 (50.6-53.7)	—
	Control	2,233	46.5 (4.2)	25.1 (3.2)	—	—	62.3	—	—	49.7 (49.0-50.4)	—
Janus part 2 (33)	Case	2,106	47.7 (9.2)	25.5 (3.0)	—	—	32.8	—	—	60.4 (59.6-61.3)	—
	Control	2,106	47.7 (9.2)	25.6 (3.0)	—	—	34.5	—	—	58.7 (57.9-59.6)	—
JPHC (34)	Case	201	59.5 (6.4)	23.4 (2.4)	100	—	34.3	26.9 (31.7)	0.5	86.9 (82.7-91.3)	—
	Control	402	59.2 (6.6)	23.3 (2.6)	100	—	40.8	31.6 (47.6)	0.0	85.6 (82.7-88.6)	—
MCCS (Unpublished) ^d	Case	818	58.4 (7.4)	27.1 (3.4)	82.7	30.7	8.3	17.9 (22.8)	—	52.5 (51.3-53.8)	—
	Control	1,151	56.4 (7.7)	26.9 (3.4)	78.2	26.9	12.9	17.8 (23.9)	—	50.2 (49.1-51.2)	—
MDCS (35)	Case	910	61.3 (6.4)	26.3 (3.3)	77.8	14.6	22.2	14.9 (14.6)	—	83.4 (81.8-85.0)	—
	Control	910	61.1 (6.4)	26.1 (3.3)	75.7	12.6	26.7	14.6 (14.2)	—	82.0 (80.4-83.6)	—
MEC (36)	Case	329	68.9 (7.1)	26.6 (4.0)	77.1	34.0	14.1	23.3 (44.1)	13.9	77.6 (74.2-81.2)	—
	Control	656	68.7 (7.2)	26.8 (4.0)	78.6	32.9	12.6	22.5 (39.1)	8.8	75.6 (73.2-78.0)	—
PCPT (37)	Case	915	63.3 (5.5)	27.5 (4.2)	87.5	38.5	6.7	9.6 (15.8)	21.7	58.6 (57.2-60.0)	—
	Control	915	63.3 (5.5)	27.6 (4.0)	87.2	37.7	6.8	8.9 (13.7)	21.6	56.0 (54.7-57.4)	—
PHS (38-40)	Case	501	58.6 (7.6)	24.6 (2.5)	—	100	7.8	7.2 (6.0)	—	72.6 (70.3-75.0)	79 (77-80)
	Control	669	59.1 (7.6)	24.6 (2.5)	—	100	7.0	7.1 (6.3)	—	71.3 (69.3-73.3)	79 (77-80)
PLCO (41)	Case	747	64.8 (5.0)	27.3 (3.6)	88.0	43.3	6.4	15.7 (29.5)	12.3	56.1 (54.8-57.4)	—
	Control	727	64.5 (4.9)	27.6 (3.9)	85.8	39.5	9.8	16.2 (30.1)	5.2	54.0 (52.7-55.4)	—
SELECT (42)	Case	1,732	63.5 (6.1)	28.5 (4.3)	84.1	54.9	5.4	9.4 (15.7)	31.2	64.9 (63.6-66.3)	—
	Control	1,732	63.6 (6.4)	28.7 (4.7)	82.6	51.0	7.1	9.2 (20.0)	15.3	63.8 (62.5-65.2)	—
SU.VI.MAX (43)	Case	184	54.1 (4.8)	25.5 (3.1)	93.3	30.2	11.1	25.1 (19.2)	12.7	44.1 (41.2-47.2)	—
	Control	368	53.8 (4.4)	25.7 (3.2)	89.3	26.8	12.8	25.5 (18.9)	4.4	45.9 (43.7-48.2)	—

Abbreviations: ARIC, Atherosclerosis Risk in Communities Study; ATBC, Alpha-Tocopherol Beta-Carotene Cancer Prevention Study; CLUE, Campaign Against Cancer and Stroke ("Give Us a Clue to Cancer") Study; EPIC, European Prospective Investigation into Cancer and Nutrition; ESTHER, Epidemiologische Studie zu Chancen der Verhütung, Früherkennung und optimierten Therapie chronischer Erkrankungen in der älteren Bevölkerung; FMC, Finnish Mobile Clinic Health Examination Survey; HIMS, Health in Men Study; HPFS, Health Professionals Follow-up Study; Janus part 1, Nordic Biological Specimen Biobank Working Group; Janus part 2, a second study using the Janus Serum Bank from Norway; JPHC, Japan Public Health Cohort; MCCS, Melbourne Collaborative Cohort Study; MDCS, Malmö Diet and Cancer Study; MEC, Multiethnic Cohort; N/A, data not available for this study; PCPT, Prostate Cancer Prevention Trial; PHS, Physicians Health Study; PLCO, Prostate, Lung, Colorectal and Ovarian Cancer Screening Trial; SELECT, Selenium and Vitamin E Cancer Prevention Trial; SU.VI.MAX, Supplementation en Vitamines et Minéraux Antioxydants.

^aValues are mean (SD) unless otherwise indicated. Numbers are for men with a 25(OH)D measurement and in complete matched case-control sets.

^bPercentages exclude men with missing values.

^c25(OH)D and 1,25(OH)₂D concentrations are season-standardized.

^dUnpublished vitamin D and prostate cancer data. Study references: ref. 44 for ARIC, ref. 45 for FMC, and ref. 46 for MCCS.

Travis et al.

Table 2. Characteristics of participants with prostate cancer^a

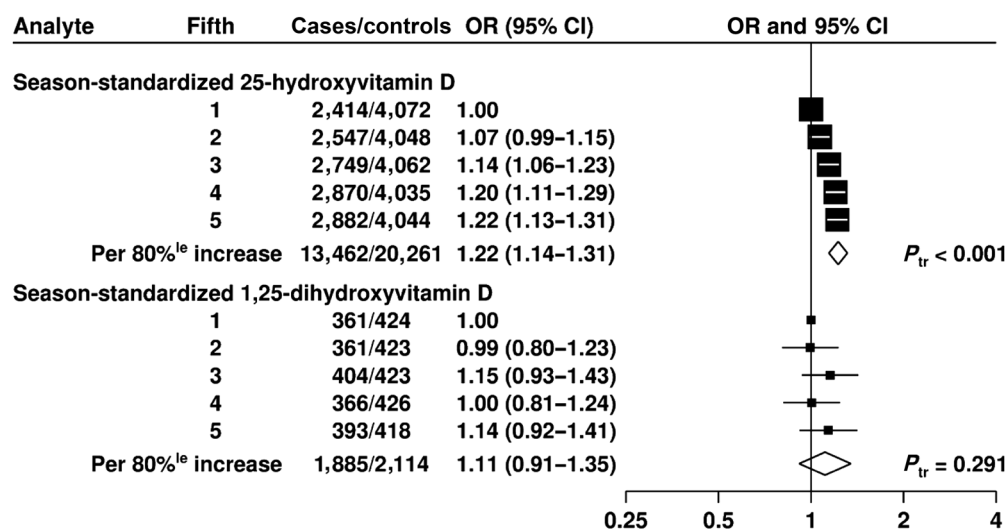
Prospective studies	Time from blood collection to diagnosis (%) ^a				Age at diagnosis (%) ^a				Year of diagnosis (%) ^a				Disease stage, aggressiveness, and grade (%)													
	<3 y		≥7 y		<60 y		60-69 y		≥70 y		Before 1990		1990-1994		1995 onward		Advanced stage ^b		Unknown stage		Aggressive disease ^b		High grade ^b		Unknown grade	
	<3 y	3-6 y	≥7 y	>70 y	<60 y	60-69 y	≥70 y	Before 1990	1990-1994	1995 onward	Advanced stage ^b	Unknown stage	Aggressive disease ^b	High grade ^b	Unknown grade											
ARIC	3.6	13.1	83.3	41.4	9.7	48.9	41.4	1.1	12.4	86.4	16.6	21.6	10.9	-	15.0											
ATBC	4.0	10.6	85.3	52.1	3.5	44.4	52.1	5.3	15.2	79.5	52.2	19.3	39.1	11.8	21.5											
CLUE I	0.0	1.6	98.4	68.9	8.2	23.0	68.9	59.0	41.0	0.0	23.5	16.4	37.7	5.1	3.3											
EPIC	33.1	50.9	16.0	20.3	17.2	62.6	20.3	0.0	0.8	99.2	26.2	28.7	21.3	10.4	16.1											
ESTHER	24.1	38.4	37.5	53.7	2.3	44.0	53.7	0.0	0.0	100	-	100	11.6	-	100											
FMC	6.2	16.8	77.0	55.3	10.6	34.2	55.3	87.0	13.0	0.0	-	100	42.2	-	100											
HIMS	42.2	45.8	12.0	100	0.0	0.0	100	0.0	0.0	100	-	100	11.5	-	100											
HPFS	23.9	42.8	33.3	50.0	12.5	37.5	50.0	0.0	6.0	94.0	4.3	8.6	7.7	8.6	11.2											
Janus part 1	1.2	5.0	93.7	101	20.7	69.2	101	27.0	56.2	16.9	-	100	-	-	100											
Janus part 2	2.0	4.2	93.7	27.3	40.6	32.1	27.3	0.7	6.0	93.4	27.7	29.4	22.8	-	100											
JPHC	9.0	17.4	73.6	53.2	7.0	39.8	53.2	0.0	3.5	96.5	28.5	24.9	22.9	24.2	69.2											
MCCS	15.4	22.7	61.9	35.6	16.6	47.8	35.6	0.0	6.2	93.8	11.4	7.1	15.0	13.6	6.4											
MDCS	12.2	30.0	57.8	46.3	5.9	47.8	46.3	0.0	2.7	97.3	-	100	-	-	100											
MEC	82.1	15.8	2.1	57.5	7.9	34.7	57.5	0.0	0.0	100	-	100	10.9	0.3	5.2											
PCPT	11.5	27.7	60.9	48.0	1.5	50.5	48.0	0.0	0.3	99.7	1.7	2.5	0.8	4.9	2.5											
PHS	7.6	17.0	75.5	37.5	11.8	50.7	37.5	25.6	59.9	14.6	13.7	3.8	24.6	10.1	3.6											
PLCO	56.4	39.1	4.6	40.3	7.5	52.2	40.3	0.0	0.0	100	18.6	0.0	7.6	10.7	0.3											
SELECT	39.9	58.3	1.8	33.3	10.4	56.3	33.3	0.0	0.0	100	1.0	1.4	1.2	7.0	13.6											
SU.VIMAX	7.1	20.7	72.3	6.5	26.6	66.9	6.5	0.0	0.0	100	-	100	2.2	9.9	6.5											

NOTE: For expansion of study names, see Table 1.

Abbreviation: y, year.

^aPercentages exclude cases with missing values. Percentages may not add up to 100 because of rounding. Stage and grade of disease are unavailable for some case patients; the percentages are shown in the "unknown stage" and "unknown grade" columns.

^bA tumor was categorized as advanced stage if it was TNM stage T3 or T4 and/or N1+ and/or M1, stage III-IV, or the equivalent. Aggressive disease was defined as tumors with TNM stage T4 and/or N1+ and/or M1 and/or stage IV disease and/or death from prostate cancer. High grade was defined as Gleason sum 8 or higher, or equivalent (undifferentiated).

**Figure 1.**

ORs (95% CIs) for prostate cancer associated with study-specific fifths of season-standardized 25(OH)D and 1,25(OH)₂D concentration in prospective studies. Estimates are from logistic regression conditioned on the matching variables and adjusted for exact age, marital status, education, smoking, height, and BMI. P trend was calculated by replacing the fifths of vitamin D with a continuous variable that was scored as 0, 0.25, 0.5, 0.75, and 1 in the conditional logistic regression model. 80%^{le}, 80 percentile; P_{tr} , P trend.

and 2B). The association was similar when only the matching factors were taken into account (Supplementary Fig. S2).

In sensitivity analyses that used overall quintile cut-points of 25(OH)D across all studies combined (rather than study-specific cut-points), the ORs for total prostate cancer were materially unchanged (Supplementary Fig. S3). When the analyses were repeated using predefined cut-points for 25(OH)D, multivariable-adjusted ORs for total prostate cancer were 0.84 (0.76–0.93), 0.89 (0.84–0.95), and 1.07 (1.00–1.13), respectively, for men with 25(OH)D < 30 (at risk for deficiency), 30–49, and ≥75 nmol/L compared with those with concentrations of 50 to 74 nmol/L (Supplementary Table S4).

Although there was no evidence of heterogeneity in the association of 25(OH)D with risk by stage of disease, there were differences by disease aggressiveness ($P_{heterogeneity} = 0.014$): the OR for an 80-percentile increase in 25(OH)D was 1.24, 1.13–1.36 for nonaggressive disease (T1–T3/N0/M0) and 0.95, 0.78–1.15 for aggressive disease (T4, N1, M1, and/or fatal prostate cancer). Similar differences were also seen between low-intermediate and high-grade disease, although these differences were not statistically significant (Fig. 3). There was no association between circulating 25(OH)D concentrations and fatal prostate cancer (Fig. 3). Supplementary Fig. S4 shows results from categorical analyses of the associations of study-specific fifths of 25(OH)D with risk for advanced stage, aggressive disease, and high-grade prostate cancer.

There was no evidence of heterogeneity in risk of total prostate cancer associated with 25(OH)D according to time to diagnosis or other participant characteristics (Fig. 3), including season of blood draw (Fig. 4A) or by circulating concentrations of 1,25(OH)₂D, IGF-I, IGFBP-3, testosterone, free testosterone, SHBG, or PSA (Supplementary Table S5A–S5G).

For 1,25(OH)₂D, there was no evidence of heterogeneity by season of blood draw (Fig. 4B), time to diagnosis, or other tumor characteristics (Supplementary Fig. S5). There was some

evidence of heterogeneity by family history of prostate cancer, with a positive association for men with a positive family history of the disease ($P_{heterogeneity} = 0.03$; multivariable-adjusted OR for an 80 percentile increase = 2.26; 95% CI, 1.19–4.32; Supplementary Fig. S4), although this was based on small numbers. There was no evidence of heterogeneity by season of blood draw (Fig. 4).

Vitamin D concentrations in relation to other participant and sample characteristics

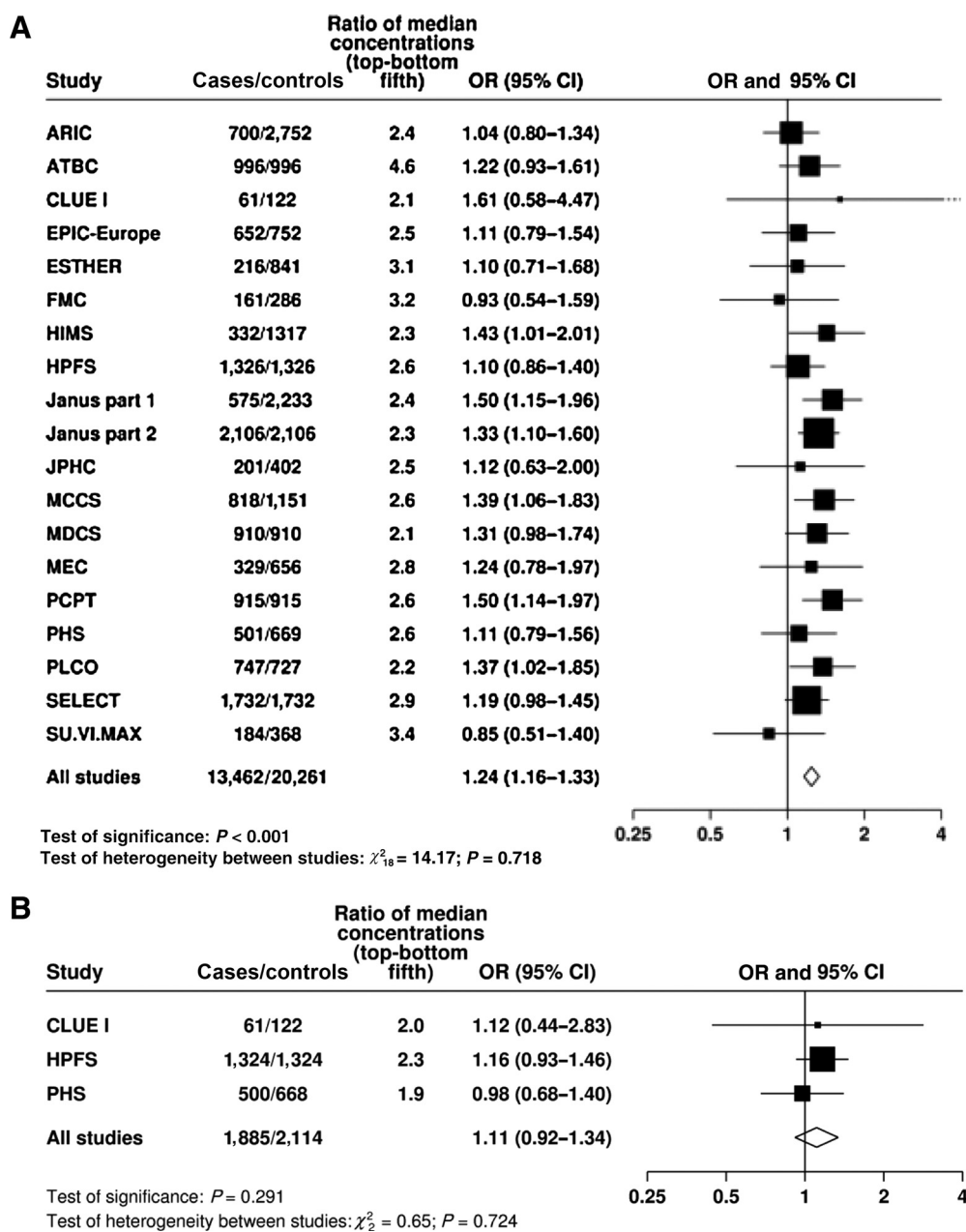
Concentrations of 25(OH)D and 1,25(OH)₂D were significantly but not strongly correlated with each other ($r = 0.13$, $P < 0.001$). In the subset of control participants with data available on other analytes, circulating 25(OH)D concentration was weakly correlated with sex hormones and other analytes (Supplementary Table S6), but neither 25(OH)D nor 1,25(OH)₂D concentration was correlated with PSA ($r = 0.01$ for both). After adjustment for age, 25(OH)D concentration was lower in men who were obese, current smokers, poorly educated, unmarried, and nondrinkers (Fig. 5). 1,25(OH)₂D displayed generally similar associations (Supplementary Fig. S6).

Discussion

This collaborative analysis of individual participant data does not support the hypothesis that vitamin D deficiency and/or insufficiency increases the risk of prostate cancer. Higher 25(OH)D levels were associated with an increased risk of non-aggressive disease, with no association for aggressive disease. We also found no evidence that circulating concentration of 1,25(OH)₂D was related to risk for prostate cancer, overall or by tumor characteristics.

This collaborative analysis includes information from the vast majority (>90%) for 25(OH)D and 85% for 1,25(OH)₂D of the published prospective data. Of the 24 studies with published data

Travis et al.

**Figure 2.**

Study-specific ORs (95% CIs) for prostate cancer associated with an 80 percentile increase in season-standardized 25(OH)D and 1,25(OH)₂D concentration. **A**, Blood season-standardized 25(OH)D concentration. **B**, Blood season-standardized 1,25(OH)₂D concentration. Estimates are from logistic regression conditioned on the matching variables within each study and without mutual adjustment for the other analytes. Heterogeneity in linear trends between studies was tested by comparing the χ^2 values for models with and without a (studies) \times (linear trend) interaction term. For expansion of study names, see Table 1.

on 25(OH)D, 7 did not contribute data to this collaboration, all of which had fewer than 200 incident cases and reported inconsistent findings (8–13). Combining the results of the current analyses with those of six of the seven additional studies (for whom data could be extracted to perform a meta-analysis) did not change the overall finding (summary relative risk of highest compared with the lowest fifth of 25(OH)D = 1.21; 95% CI, 1.13–1.30), suggesting that inclusion of participant-level data from these studies would not have materially altered the results.

Two studies with published data on 1,25(OH)₂D did not contribute data, one of which reported an inverse association (based on 181 cases, RR not given for 1,25(OH)₂D alone; refs. 10, 14) and another that found no association (based on 136 cases; ref. 9). Including these two studies would not have materially changed our results. Thus, we believe that the findings from the current study provide a reliable summary of the totality of the evidence on the association between circulating vitamin D concentrations and prostate cancer risk.

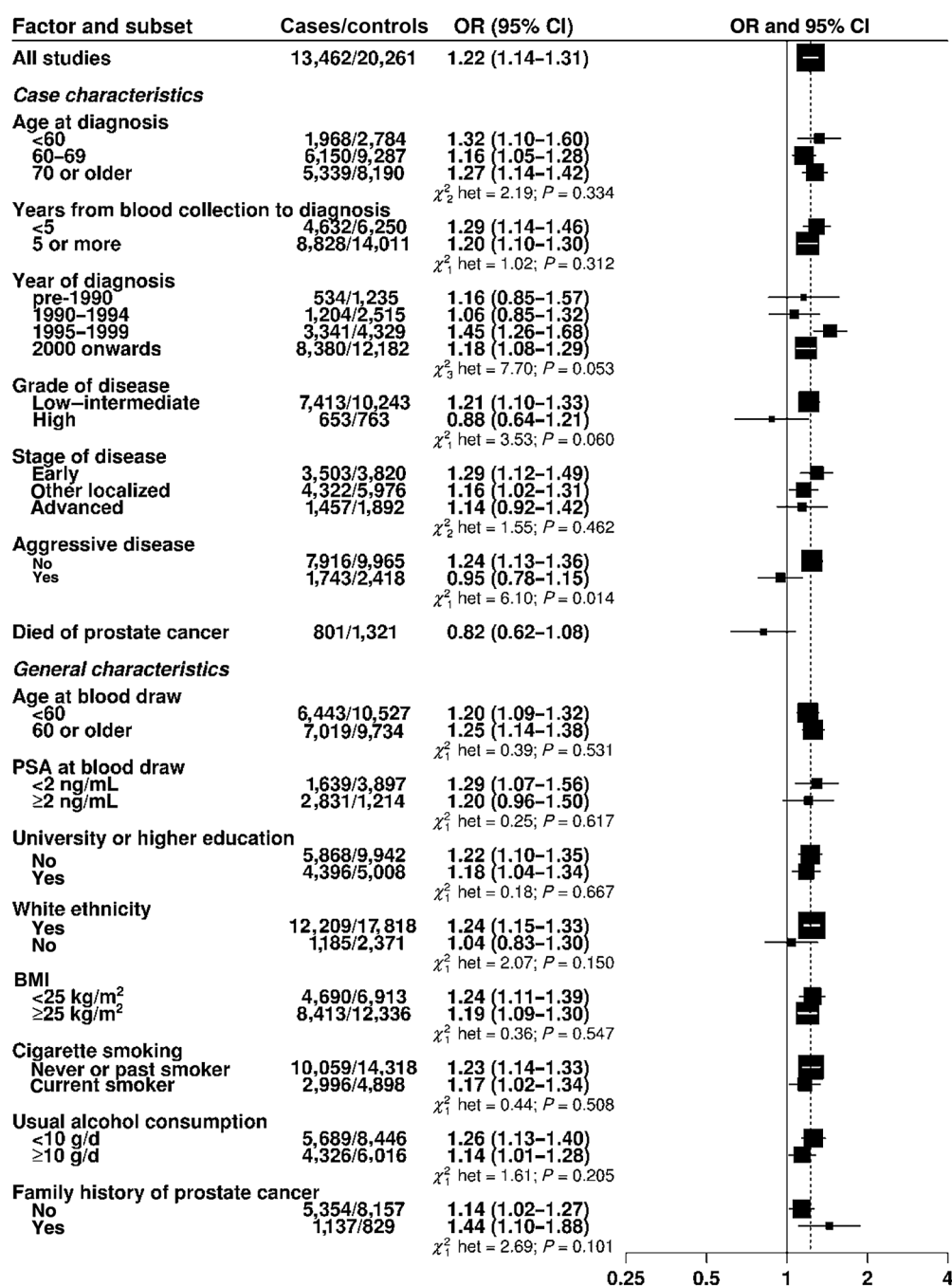
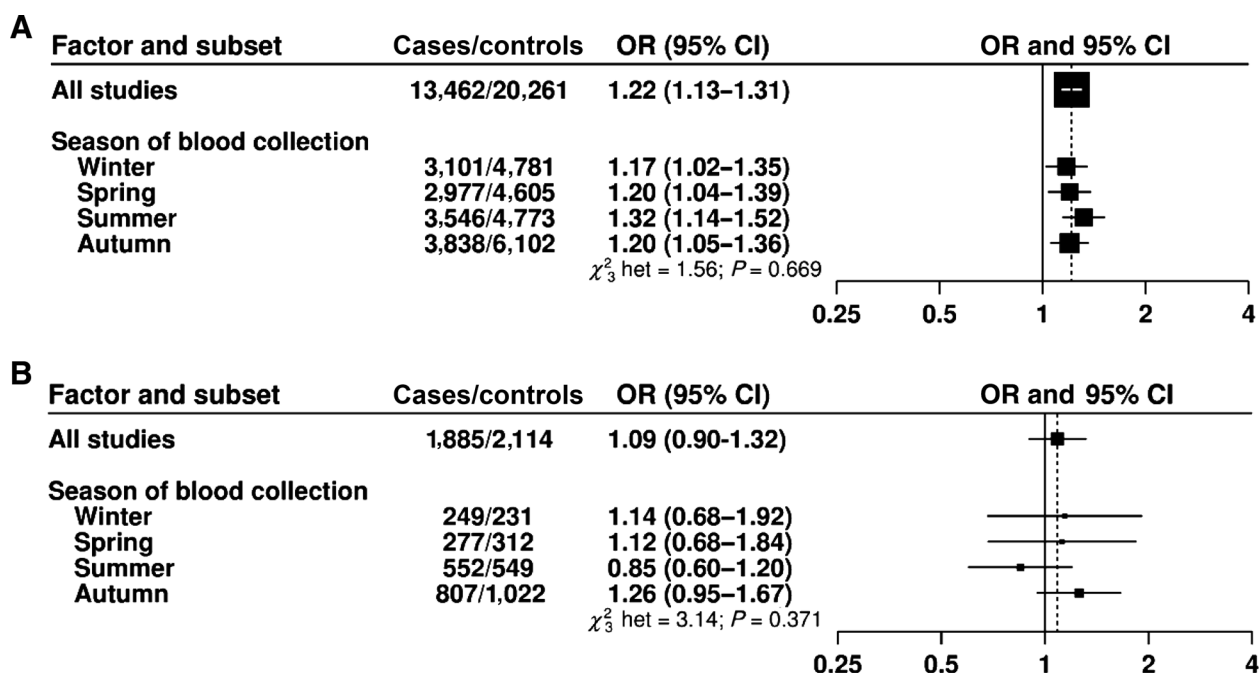


Figure 3.

ORs (95% CIs) for prostate cancer associated with a study-specific 80 percentile increase in season-standardized 25(OH)D in prospective studies for selected subgroups. The ORs were conditioned on the matching variables and adjusted for exact age, marital status, education, smoking, height, and BMI. Tests for heterogeneity for the case-defined factors were obtained by fitting separate models for each subgroup and assuming independence of the ORs using a method analogous to a meta-analysis. Tests for heterogeneity for the other factors were assessed with a χ^2 test of interaction between the subgroup and continuous trend test variable. Note that the number of cases for each tumor subtype may be fewer than shown in the baseline tables because here the analysis for each subgroup of a case-defined factor is restricted to complete matched sets for each category of the factor; in turn, some matched sets contain a mixture of subtypes, and while controls are allocated case-defined characteristics in equal proportion to the cases, 25(OH)D may be unknown for some participants, leading to incomplete matched sets. Stage (early, T1, and/or stage I; other localized, T2/N0/M0, and/or stage II, and advanced, T3–T4/N1/M1, and/or stage III–IV), grade (low–intermediate), Gleason sum was < 8 or equivalent; high, Gleason sum was \geq 8 or equivalent, and aggressive (T4/N1/M1 and/or stage IV and/or prostate cancer death). White ethnicity (89.4% yes, 10.6% no).

Travis et al.

**Figure 4.**

ORs (95% CIs) for prostate cancer associated with a study-specific 80 percentile increase in 25(OH)D (A) and 1,25-dihydroxyvitamin D (B) concentration by season. The ORs were conditioned on the matching variables and adjusted for exact age, marital status, education, smoking, height, and BMI. Tests for heterogeneity were assessed with a χ^2 test of interaction between the subgroup and continuous trend test variable. **A**, Blood 25(OH)D concentration. **B**, Blood 1,25(OH)₂D concentration.

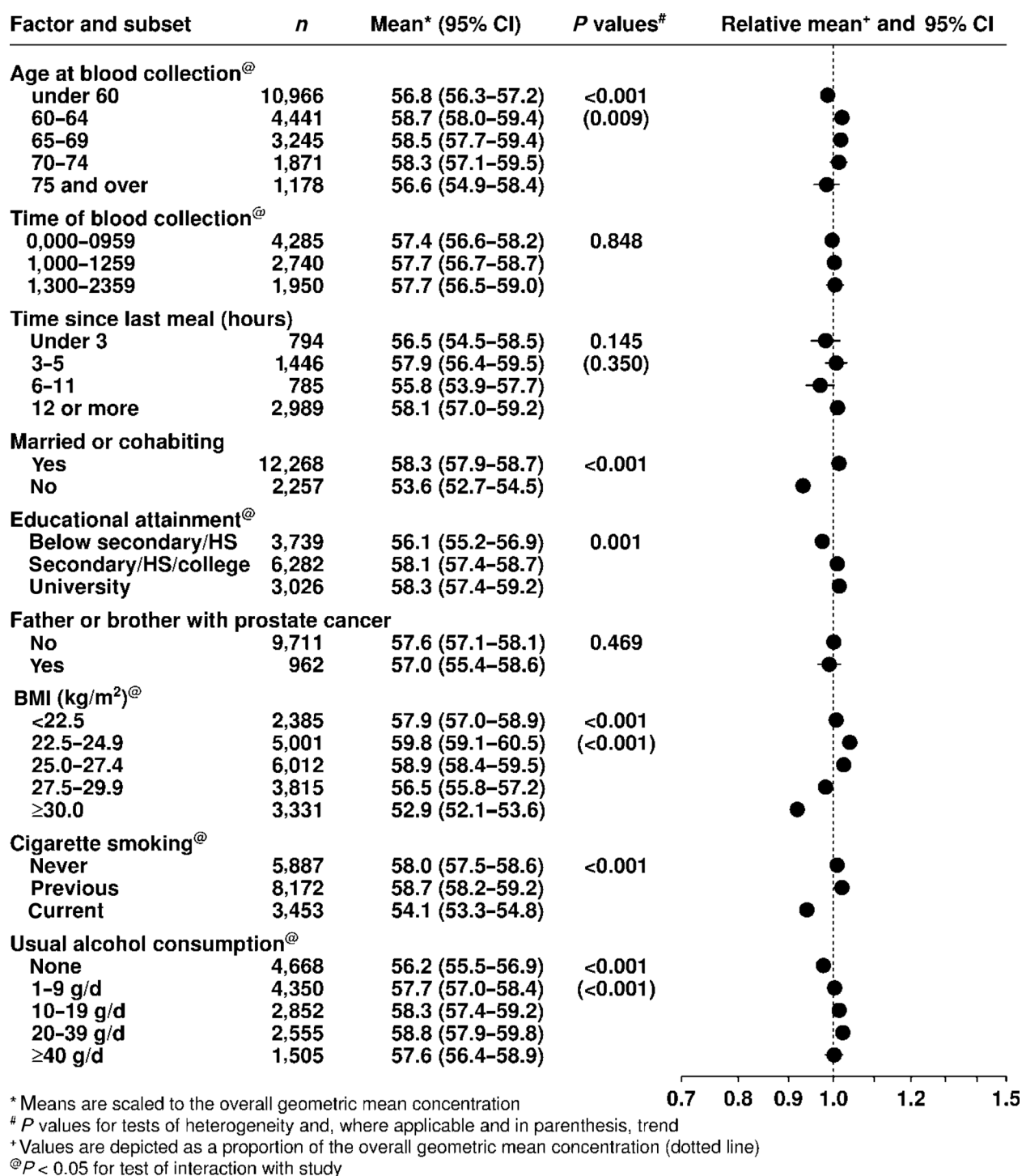
Our findings do not appear to support the evidence from experimental research using cell lines and animal models that vitamin D compounds may promote cell differentiation, inhibit prostate cancer cell growth and invasion, and stimulate apoptosis (15, 16). Although there are no published data from adequately powered randomized controlled trials for the effects of vitamin D supplementation on prostate cancer incidence, two large recent studies have exploited GWAS-identified variation in genes related to vitamin-D synthesis, metabolism, and binding to study the possible relationship with prostate cancer risk. A Mendelian randomization analysis of data from up to 69,837 prostate cancer cases in the PRACtical and GAME-ON consortia found no evidence for an association with risk for either total (OR in PRACtical per genetically-determined 25 nmol/L increase in 25(OH)D concentration = 0.95, 95% CI, 0.80–1.13; $P = 0.55$) or aggressive prostate cancer (OR in GAME-ON = 1.14, 0.85–1.54; $P = 0.38$; ref. 17).

It is possible that our finding of a positive association between overall and nonaggressive prostate cancer risk and circulating 25(OH)D concentration may be explained by detection bias, in that health-conscious men who may be more likely to have a higher sun exposure, a higher dietary intake of vitamin D and/or vitamin D supplementation, are more likely to have a PSA test or to seek medical attention with early symptoms. The observation that vitamin D deficiency was associated with a reduced risk of prostate cancer and higher levels with an increased risk (particularly for nonaggressive disease) supports this hypothesis. Nonetheless, a positive association between 25(OH)D and prostate cancer risk was reported in both the Prostate, Lung, Colorectal, and Ovarian Cancer Screening Trial (PLCO) and Prostate Cancer Prevention Trial (PCPT) studies, in which almost all men

had either regular PSA testing (as data were provided solely from the screening arm in PLCO and PCPT) or had an end-of-study biopsy (PCPT), suggesting that factors other than detection bias may be involved.

It is difficult to draw conclusions from the current pooled analyses of 1,25(OH)₂D as only a small number of prospective studies have measured this analyte. Although circulating 1,25(OH)₂D concentrations are considered to be tightly regulated within a narrow range (18), we found some evidence of seasonal variation in 1,25(OH)₂D concentrations, similar to that of 25(OH)D, and also differences in concentrations according to age, adiposity, cigarette smoking status, and alcohol consumption. It is difficult to determine the extent to which these associations are due to cross-reactivity of the 1,25(OH)₂D assay with 25(OH)D (or other molecules), although the correlation between 25(OH)D and 1,25(OH)₂D was weak ($r = 0.13$) and there was no evidence for an association between 1,25(OH)₂D and prostate cancer risk.

A number of previous studies have evaluated the joint association of 25(OH)D and 1,25(OH)₂D with prostate cancer risk (9, 19–21), but their sample sizes were small. We found no evidence that the association of prostate cancer risk with 25(OH)D is modified by circulating concentrations of 1,25(OH)₂D, although even in this collaborative pooled dataset, there are still relatively few cases ($n = 1,885$) with data on both vitamin D analytes. It has also been hypothesized that vitamin D may influence tumor growth by modulating the action of growth factors, such as IGF-I, that normally stimulate proliferation (16), for example by stimulating the release of IGFBP-3 (22). We observed weak correlations of circulating 25(OH)D or 1,25(OH)₂D concentrations with

**Figure 5.**

Geometric mean concentrations (95% CIs) of season-standardized 25(OH)D (nmol/L) for controls from all studies by various factors, adjusted for study and age at blood collection. Means are scaled to, and depicted as a proportion of, the overall geometric mean concentration (dotted line). *P* values are for tests of heterogeneity and, where applicable in parentheses, trend.

IGF-I, IGFBP-1, IGFBP-2, and IGFBP-3 concentrations and with levels of other blood biomarkers (e.g., free testosterone or PSA), and there was no evidence of modification of the association of 25(OH)D with risk according to these biomarkers.

This study has some limitations. The calculated relative risks were based on single measurements of vitamin D, which may not accurately reflect long-term circulating concentration. Several studies have found moderate correlations between two measures

Travis et al.

of 25(OH)D, even when the samples were not taken at the same time of the year, with correlations between 0.42 and 0.70 in blood taken between 3 and 14 years apart (reviewed in ref. 23). These findings suggest that a single measure of circulating 25(OH)D is an informative measure of vitamin D status, at least over the medium term. The published prospective data on vitamin D and risk for aggressive prostate cancer subtypes are still relatively limited. Thus, even in this pooled analysis, the total number of cases with aggressive disease and data on 25(OH)D is relatively small ($n = 1,446$), therefore the results by tumor subtype should be interpreted with some caution. Moreover, we do not have detailed data on other sun exposure measures, such as solar radiation levels in each study location, which would also vary within each individual study depending on where each participant lives. Finally, more than 95% of participants included in this pooled analysis were of White ethnicity, and results may therefore not be generalizable to non-White populations.

In summary, this collaborative analysis of the worldwide data on circulating vitamin D and prostate cancer risk suggests that a high vitamin D concentration is not associated with a lower risk of prostate cancer. Rather, the findings suggest that men with elevated circulating concentrations of 25(OH)D are more likely to be diagnosed with nonaggressive prostate cancer, though this may be due to detection bias. There was no evidence for an association with aggressive disease.

Disclosure of Potential Conflicts of Interest

E.A. Platz is Senior Editor at the AACR. R. Blomhoff has an ownership interest (including stock, patents, etc.) in AS Vitas. F.C. Hamdy received honoraria from the speakers' bureau of Steba Biotech and Takeda. No potential conflicts of interest were disclosed by the other authors.

Disclaimer

The funders of the study had no role in the study design, data collection, data analysis, data interpretation, or writing of the report. The authors in the writing team had full access to all data in the study. The corresponding author had the final responsibility for the decision to submit for publication. The Endogenous Hormones, Nutritional Biomarkers and Prostate Cancer Collaborative Group (EHNBPCCG) data are not suitable for sharing, but are suitable for research involving further analyses in collaboration with the Cancer Epidemiology Unit, Nuffield Department of Population Health, University of Oxford.

Authors' Contributions

Conception and design: R.C. Travis, A. Perez-Cornago, D. Albanes, K.J. Helzlsouer, P.H. Peeters, B. Bueno-de-Mesquita, M.-J. Sánchez, B.B. Yeap, L. Flicker, E.L. Giovannucci, D.R. English, T.J. Key, N.E. Allen

Development of methodology: R.C. Travis, A. Perez-Cornago, O.P. Almeida, T.J. Key

Acquisition of data (provided animals, acquired and managed patients, provided facilities, etc.): A. Perez-Cornago, D. Albanes, C.E. Joshi, P.L. Lutsey, K.J. Helzlsouer, K. Visvanathan, D. Palli, P.H. Peeters, B. Bueno-de-Mesquita, A. Trichopoulos, M.-J. Sánchez, H. Brenner, B. Schöttker, L. Perna, B. Holleczeck, P. Knekt, H. Rissanen, B.B. Yeap, L. Flicker, O.P. Almeida, Y.Y.E. Wong, J.M. Chan, E.L. Giovannucci, M.J. Stampfer, R.E. Gislefoss, T. Bjørge, H.E. Meyer, R. Blomhoff, S. Tsugane, N. Sawada, D.R. English, A.K. Heath, E.J. Williamson, J. Manjer, J. Malm, M. Almquist, L. Le Marchand, C.A. Haiman, L.R. Wilkens, J.M. Schenk, C.M. Tangen, A. Black, M.B. Cook, W.-Y. Huang, R.G. Ziegler, R.M. Martin, F.C. Hamdy, J.L. Donovan, D.E. Neal, M. Touvier, S. Herberg, P. Galan, M. Deschasaux, T.J. Key

Analysis and interpretation of data (e.g., statistical analysis, biostatistics, computational analysis): R.C. Travis, A. Perez-Cornago, P.N. Appleby, P.H. Peeters, M.J. Gunter, K.K. Tsilidis, H. Brenner, Y.Y.E. Wong, M.J. Stampfer, T. Bjørge, H.E. Meyer, R. Blomhoff, W.-Y. Huang, R.M. Martin, M. Touvier, N.E. Allen

Writing, review, and/or revision of the manuscript: R.C. Travis, A. Perez-Cornago, P.N. Appleby, D. Albanes, C.E. Joshi, P.L. Lutsey, A.M. Mondul, E.A. Platz, S.J. Weinstein, T.M. Layne, K.J. Helzlsouer, K. Visvanathan, D. Palli, P.H. Peeters, B. Bueno-de-Mesquita, A. Trichopoulos, M.J. Gunter, K.K. Tsilidis, M.-J. Sánchez, A. Olsen, H. Brenner, B. Schöttker, L. Perna, B. Holleczeck, P. Knekt, H. Rissanen, B.B. Yeap, L. Flicker, O.P. Almeida, J.M. Chan, E.L. Giovannucci, G. Ursin, R.E. Gislefoss, T. Bjørge, H.E. Meyer, R. Blomhoff, S. Tsugane, D.R. English, D.W. Eyles, A.K. Heath, J. Manjer, M. Almquist, L. Le Marchand, J.M. Schenk, C.M. Tangen, A. Black, M.B. Cook, W.-Y. Huang, R.G. Ziegler, R.M. Martin, F.C. Hamdy, J.L. Donovan, D.E. Neal, M. Touvier, S. Herberg, P. Galan, M. Deschasaux, T.J. Key, N.E. Allen

Administrative, technical, or material support (i.e., reporting or organizing data, constructing databases): A. Perez-Cornago, P.N. Appleby, S.J. Weinstein, B. Holleczeck, H. Rissanen, M.J. Stampfer, T. Bjørge, A.K. Heath, E.J. Williamson, J. Manjer, M.B. Cook

Study supervision: R.C. Travis, A. Perez-Cornago, B. Bueno-de-Mesquita, O.P. Almeida, T.J. Key

Acknowledgments

We thank the men who participated in the collaborating studies, the research staff, the collaborating laboratories, and the funding agencies in each of the studies. The authors are solely responsible for the study design, data collection, analysis and interpretation of the data, writing of the article, and decision to submit the article for publication.

This work was supported by Cancer Research UK grant C8221/A19170 and involved centralized pooling, checking, and data analysis. Details of funding for the original studies are in the relevant publications (and see Supplementary Materials).

The costs of publication of this article were defrayed in part by the payment of page charges. This article must therefore be hereby marked *advertisement* in accordance with 18 U.S.C. Section 1734 solely to indicate this fact.

Received August 9, 2018; revised October 4, 2018; accepted November 8, 2018; published first November 13, 2018.

References

- Schwartz GG, Hanchette CL. UV, latitude, and spatial trends in prostate cancer mortality: all sunlight is not the same (United States). *Cancer Causes Control* 2006;17:1091–101.
- Schwartz GG, Hulka BS. Is vitamin D deficiency a risk factor for prostate cancer? (Hypothesis). *Anticancer Res* 1990;10:1307–11.
- Gilbert R, Martin RM, Beynon R, Harris R, Savovic J, Zuccolo L, et al. Associations of circulating and dietary vitamin D with prostate cancer risk: a systematic review and dose-response meta-analysis. *Cancer Causes Control* 2011;22:319–40.
- Roddam AW, Allen NE, Appleby P, Key TJ, Endogenous H, Prostate Cancer Collaborative G. Endogenous sex hormones and prostate cancer: a collaborative analysis of 18 prospective studies. *J Natl Cancer Inst* 2008;100:170–83.
- Price AJ, Travis RC, Appleby PN, Albanes D, Barricarte Gurrea A, Bjørge T, et al. Circulating folate and vitamin B and risk of prostate cancer: a collaborative analysis of individual participant data from six cohorts including 6875 cases and 8104 controls. *Eur Urol* 2016;70:941–51.
- Key TJ, Appleby PN, Allen NE, Reeves GK. Pooling biomarker data from different studies of disease risk, with a focus on endogenous hormones. *Cancer Epidemiol Biomarkers Prev* 2010;19:960–5.
- In: Ross AC, Taylor CL, Yaktine AL, Del Valle HB, editors. *Dietary reference intakes for calcium and vitamin D*. Washington, DC; 2011.
- Tuohimaa P, Tenkanen L, Ahonen M, Lumme S, Jellum E, Hallmans G, et al. Both high and low levels of blood vitamin D are associated with a higher prostate cancer risk: a longitudinal, nested case-control study in the Nordic countries. *Int J Cancer* 2004;108:104–8.

9. Nomura AM, Stemmermann GN, Lee J, Kolonel LN, Chen TC, Turner A, et al. Serum vitamin D metabolite levels and the subsequent development of prostate cancer (Hawaii, United States). *Cancer Causes Control* 1998;9:425–32.
10. Corder EH, Guess HA, Hulka BS, Friedman GD, Sadler M, Vollmer RT, et al. Vitamin D and prostate cancer: a prediagnostic study with stored sera. *Cancer Epidemiol Biomarkers Prev* 1993;2:467–72.
11. Barnett CM, Nielson CM, Shannon J, Chan JM, Shikany JM, Bauer DC, et al. Serum 25-OH vitamin D levels and risk of developing prostate cancer in older men. *Cancer Causes Control* 2010;21:1297–303.
12. Jacobs ET, Giuliano AR, Martinez ME, Hollis BW, Reid ME, Marshall JR. Plasma levels of 25-hydroxyvitamin D, 1,25-dihydroxyvitamin D and the risk of prostate cancer. *J Steroid Biochem Mol Biol* 2004;89–90:533–7.
13. Ordóñez-Mena JM, Schottker B, Fedirko V, Jenab M, Olsen A, Halkjaer J, et al. Pre-diagnostic vitamin D concentrations and cancer risks in older individuals: an analysis of cohorts participating in the CHANCES consortium. *Eur J Epidemiol* 2016;31:311–23.
14. Corder EH, Friedman GD, Vogelmann JH, Orentreich N. Seasonal variation in vitamin D, vitamin D-binding protein, and dehydroepiandrosterone: risk of prostate cancer in black and white men. *Cancer Epidemiol Biomarkers Prev* 1995;4:655–9.
15. Swami S, Krishnan AV, Feldman D. Vitamin D metabolism and action in the prostate: implications for health and disease. *Mol Cell Endocrinol* 2011;347:61–9.
16. Fleet JC. Molecular actions of vitamin D contributing to cancer prevention. *Mol Aspects Med* 2008;29:388–96.
17. Dimitrakopoulou VI, Tsilidis KK, Haycock PC, Dimou NL, Al-Dabhani K, Martin RM, et al. Circulating vitamin D concentration and risk of seven cancers: Mendelian randomisation study. *BMJ* 2017;359:j4761.
18. Holick MF. Vitamin D deficiency. *N Engl J Med* 2007;357:266–81.
19. Gann PH, Ma J, Hennekens CH, Hollis BW, Haddad JG, Stampfer MJ. Circulating vitamin D metabolites in relation to subsequent development of prostate cancer. *Cancer Epidemiol Biomarkers Prev* 1996;5:121–6.
20. Li H, Stampfer MJ, Hollis JB, Mucci LA, Gaziano JM, Hunter D, et al. A prospective study of plasma vitamin D metabolites, vitamin D receptor polymorphisms, and prostate cancer. *PLoS Med* 2007;4:e103.
21. Platz EA, Leitzmann MF, Hollis BW, Willett WC, Giovannucci E. Plasma 1,25-dihydroxy- and 25-hydroxyvitamin D and subsequent risk of prostate cancer. *Cancer Causes Control* 2004;15:255–65.
22. Peng L, Malloy PJ, Feldman D. Identification of a functional vitamin D response element in the human insulin-like growth factor binding protein-3 promoter. *Mol Endocrinol* 2004;18:1109–19.
23. Meng JE, Hovey KM, Wactawski-Wende J, Andrews CA, Lamonte MJ, Horst RL, et al. Intraindividual variation in plasma 25-hydroxyvitamin D measures 5 years apart among postmenopausal women. *Cancer Epidemiol Biomarkers Prev* 2012;21:916–24.
24. Albanes D, Mondul AM, Yu K, Parisi D, Horst RL, Virtamo J, et al. Serum 25-hydroxyvitamin D and prostate cancer risk in a large nested case-control study. *Cancer Epidemiol Biomarkers Prev* 2011;20:1850–60.
25. Braun MM, Helzlsouer KJ, Hollis BW, Comstock GW. Prostate cancer and prediagnostic levels of serum vitamin D metabolites (Maryland, United States). *Cancer Causes Control* 1995;6:235–9.
26. Travis RC, Crowe FL, Allen NE, Appleby PN, Roddam AW, Tjønneland A, et al. Serum vitamin D and risk of prostate cancer in a case-control analysis nested within the European Prospective Investigation into Cancer and Nutrition (EPIC). *Am J Epidemiol* 2009;169:1223–32.
27. Ordóñez-Mena JM, Schöttker B, Haug U, Müller H, Köhler J, Schomburg L, et al. Serum 25-hydroxyvitamin D and cancer risk in older adults: results from a large German prospective cohort study. *Cancer Epidemiol Biomarkers Prev* 2013;22:905–16.
28. Wong YY, Hyde Z, McCaul KA, Yeap BB, Golledge J, Hankey GJ, et al. In older men, lower plasma 25-hydroxyvitamin D is associated with reduced incidence of prostate, but not colorectal or lung cancer. *PLoS One* 2014;9:e99954.
29. Platz EA, Leitzmann MF, Hollis BW, Willett WC, Giovannucci E. Plasma 1,25-dihydroxy- and 25-hydroxyvitamin D and subsequent risk of prostate cancer. *Cancer Causes Control* 2004;15:255–65.
30. Mikhak B, Hunter DJ, Spiegelman D, Platz EA, Hollis BW, Giovannucci E. Vitamin D receptor (VDR) gene polymorphisms and haplotypes, interactions with plasma 25-hydroxyvitamin D and 1,25-dihydroxyvitamin D, and prostate cancer risk. *Prostate* 2007;67:911–23.
31. Shui IM, Mucci LA, Kraft P, Tamimi RM, Lindstrom S, Penney KL, et al. Vitamin D-related genetic variation, plasma vitamin D, and risk of lethal prostate cancer: a prospective nested case-control study. *J Natl Cancer Inst* 2012;104:690–9.
32. Tuohimaa P, Tenkanen L, Ahonen M, Lumme S, Jellum E, Hallmans G, et al. Both high and low levels of blood vitamin D are associated with a higher prostate cancer risk: a longitudinal, nested case-control study in the Nordic countries. *Int J Cancer* 2004;108:104–8.
33. Meyer HE, Rødsahl TE, Børge T, Brustad M, Blomhoff R. Vitamin D, season, and risk of prostate cancer: a nested case-control study within Norwegian health studies. *Am J Clin Nutr* 2013;97:147–54.
34. Sawada N, Inoue M, Iwasaki M, Yamaji T, Shimazu T, Sasazuki S, et al. Plasma 25-hydroxy vitamin D and subsequent prostate cancer risk in a nested Case-Control study in Japan: The JPHC study. *Eur J Clin Nutr* 2017;71:132–6.
35. Brandstedt J, Almquist M, Manjer J, Malm J. Vitamin D, PTH, and calcium and the risk of prostate cancer: a prospective nested case-control study. *Cancer Causes Control* 2012;23:1377–85.
36. Park SY, Cooney RV, Wilkens LR, Murphy SP, Henderson BE, Kolonel LN. Plasma 25-hydroxyvitamin D and prostate cancer risk: the multiethnic cohort. *Eur J Cancer* 2010;46:932–6.
37. Schenk JM, Till CA, Tangen CM, Goodman PJ, Song X, Torkko KC, et al. Serum 25-hydroxyvitamin D concentrations and risk of prostate cancer: results from the Prostate Cancer Prevention Trial. *Cancer Epidemiol Biomarkers Prev* 2014;23:1484–93.
38. Gann PH, Ma J, Hennekens CH, Hollis BW, Haddad JG, Stampfer MJ. Circulating vitamin D metabolites in relation to subsequent development of prostate cancer. *Cancer Epidemiol Biomarkers Prev* 1996;5:121–6.
39. Ma J, Stampfer MJ, Gann PH, Hough HL, Giovannucci E, Kelsey KT, et al. Vitamin D receptor polymorphisms, circulating vitamin D metabolites, and risk of prostate cancer in United States physicians. *Cancer Epidemiol Biomarkers Prev* 1998;7:385–90.
40. Li H, Stampfer MJ, Hollis JB, Mucci LA, Gaziano JM, Hunter D, et al. A prospective study of plasma vitamin D metabolites, vitamin D receptor polymorphisms, and prostate cancer. *PLoS Med* 2007;4:e103.
41. Ahn J, Albanes D, Berndt SI, Peters U, Chatterjee N, Freedman ND, et al. Vitamin D-related genes, serum vitamin D concentrations and prostate cancer risk. *Carcinogenesis* 2009;30:769–76.
42. Kristal AR, Till C, Song X, Tangen CM, Goodman PJ, Neuhauser ML, et al. Plasma vitamin D and prostate cancer risk: results from the Selenium and Vitamin E Cancer Prevention Trial. *Cancer Epidemiol Biomarkers Prev* 2014;23:1494–504.
43. Deschasaux M, Souberbielle JC, Latino-Martel P, Sutton A, Charneau N, Druet-Pecollo N, et al. A prospective study of plasma 25-hydroxyvitamin D concentration and prostate cancer risk. *Br J Nutr* 2016;115:305–14.
44. Joshi CE, Barber JR, Coresh J, Couper DJ, Mosley TH, Vitolins MZ, et al. Enhancing the infrastructure of the Atherosclerosis Risk in Communities (ARIC) study for cancer epidemiology research: ARIC Cancer. *Cancer Epidemiol Biomarkers Prev* 2018;27:295–305.
45. Knekt P, Laaksonen M, Mattila C, Härkänen T, Marniemi J, Heliövaara M, et al. Serum vitamin D and subsequent occurrence of type 2 diabetes. *Epidemiology* 2008;19:666–71.
46. Milne RL, Fletcher AS, MacInnis RJ, Hodge AM, Hopkins AH, Bassett JK, et al. Cohort Profile: The Melbourne Collaborative Cohort Study (Health 2020). *Int J Epidemiol* 2017;46:1757.

Cancer Research

The Journal of Cancer Research (1916–1930) | The American Journal of Cancer (1931–1940)

A Collaborative Analysis of Individual Participant Data from 19 Prospective Studies Assesses Circulating Vitamin D and Prostate Cancer Risk

Ruth C. Travis, Aurora Perez-Cornago, Paul N. Appleby, et al.

Cancer Res 2019;79:274-285. Published OnlineFirst November 13, 2018.

Updated version Access the most recent version of this article at:
doi:[10.1158/0008-5472.CAN-18-2318](https://doi.org/10.1158/0008-5472.CAN-18-2318)

Supplementary Material Access the most recent supplemental material at:
<http://cancerres.aacrjournals.org/content/suppl/2018/11/13/0008-5472.CAN-18-2318.DC1>

Cited articles This article cites 45 articles, 14 of which you can access for free at:
<http://cancerres.aacrjournals.org/content/79/1/274.full#ref-list-1>

E-mail alerts [Sign up to receive free email-alerts](#) related to this article or journal.

Reprints and Subscriptions To order reprints of this article or to subscribe to the journal, contact the AACR Publications Department at pubs@aacr.org.

Permissions To request permission to re-use all or part of this article, use this link
<http://cancerres.aacrjournals.org/content/79/1/274>.
Click on "Request Permissions" which will take you to the Copyright Clearance Center's (CCC) Rightslink site.