

Figure S1: Kaplan – Meier survival curves of in-hospital mortality in vitamin D-treated and untreated patients

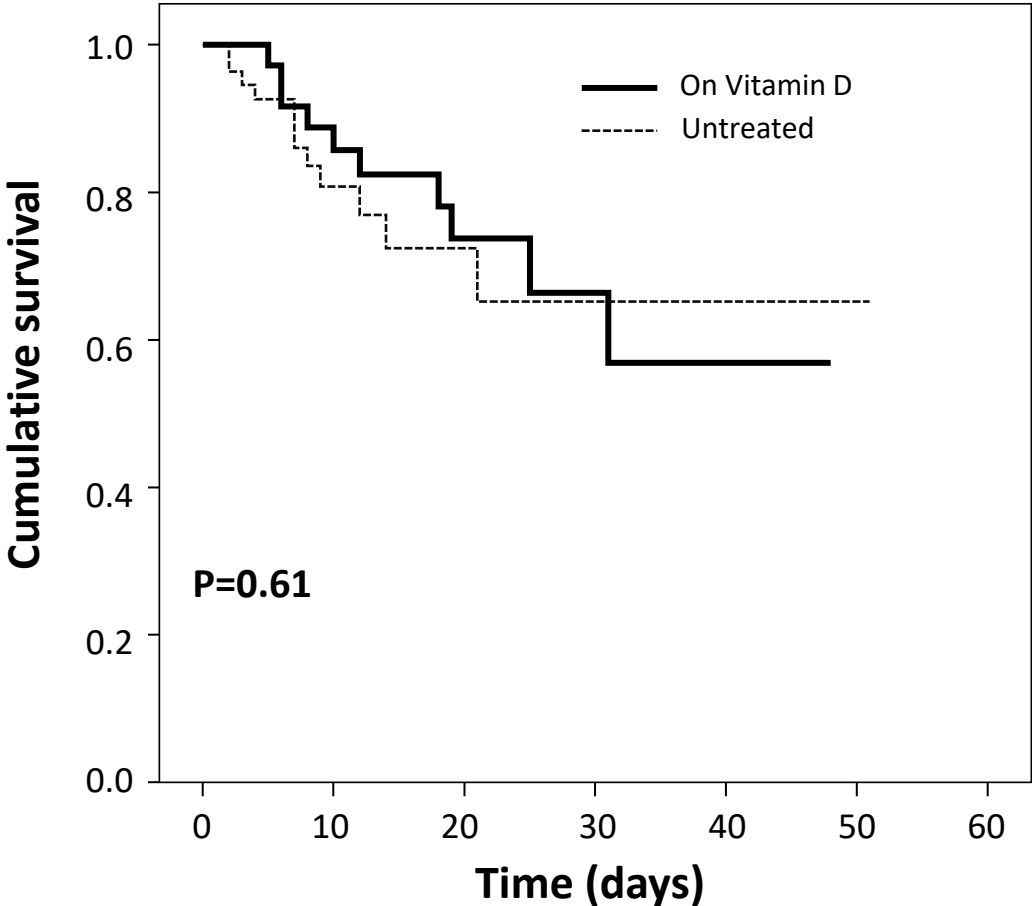
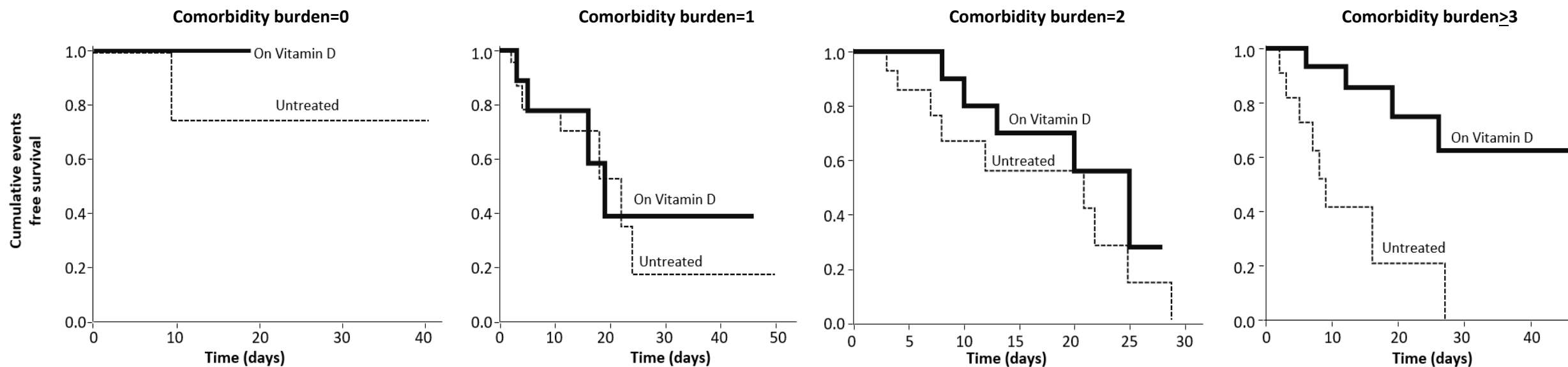


Figure S2: Kaplan-Meier survival curves showing effect modification by comorbidity burden on the effectiveness of vitamin D treatment for the combined endpoint (death/ICU transfer)



Cox regression analysis of the effect modification by the comorbidity burden on the effectiveness of Vitamin D on the study outcome (death/ICU transfer).

Comorbidity burden	Crude effect modification analysis* (HR, 95% CI and P-value)	Adjusted effect modification analysis** (HR, 95% CI and P-value)
0	1.81 (0.45-7.27)	1.76 (0.44-7.06)
1	0.82 (0.35-1.93)	0.78 (0.32-1.90)
2	0.37 (0.19-0.72)	0.35 (0.17-0.73)
≥3	0.17 (0.06-0.46)	0.16 (0.05-0.46)
P for effect modification by comorbidity burden	0.02	0.02

* Adjusted for the main effect of vitamin D treatment and comorbidity burden.

** Adjusted for the main effect of vitamin D treatment, comorbidity burden and Propensity Score 2.

HR=hazard ratio