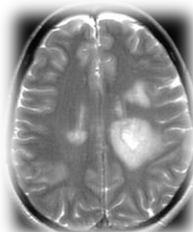
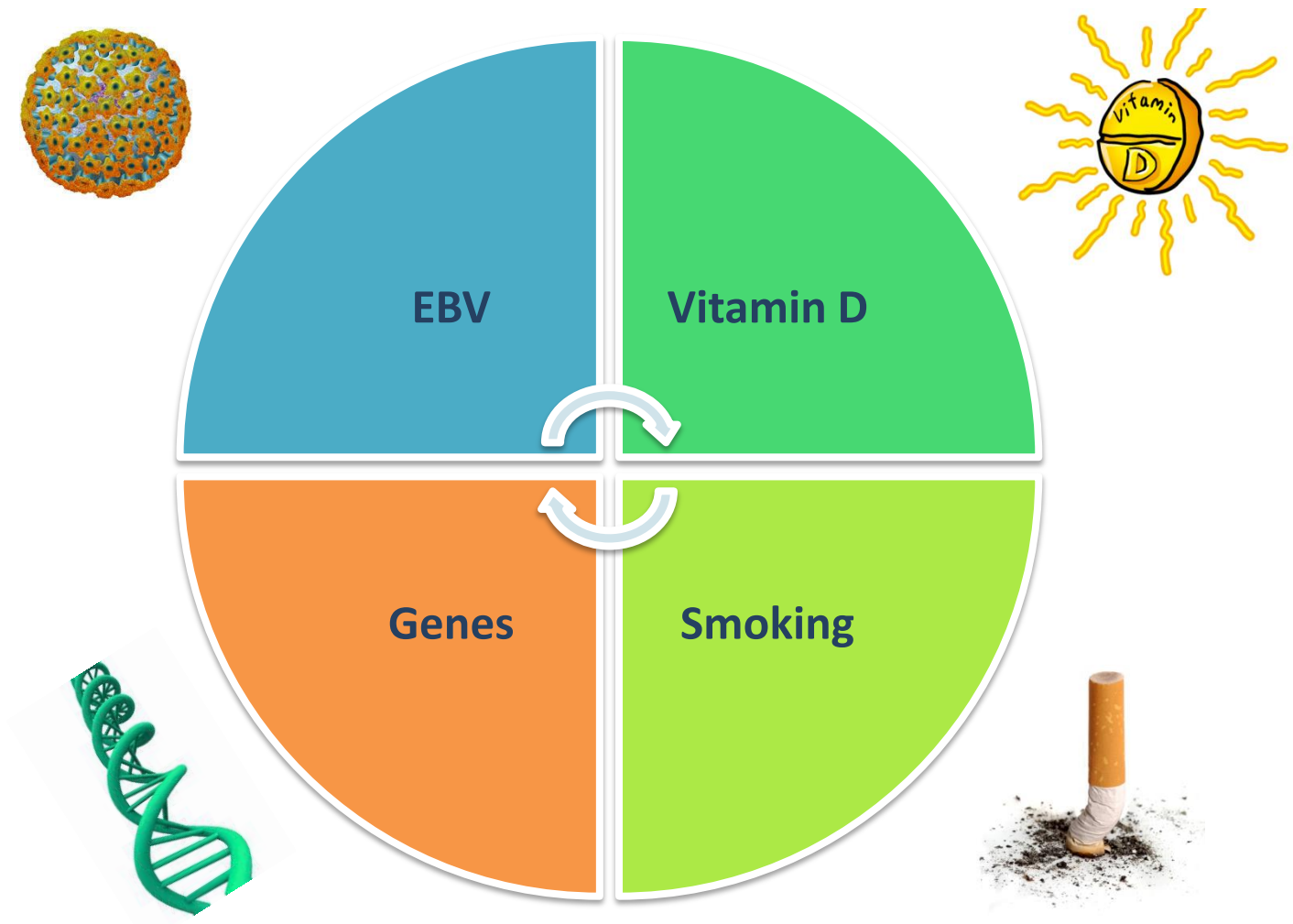


Why haven't we cured MS yet?

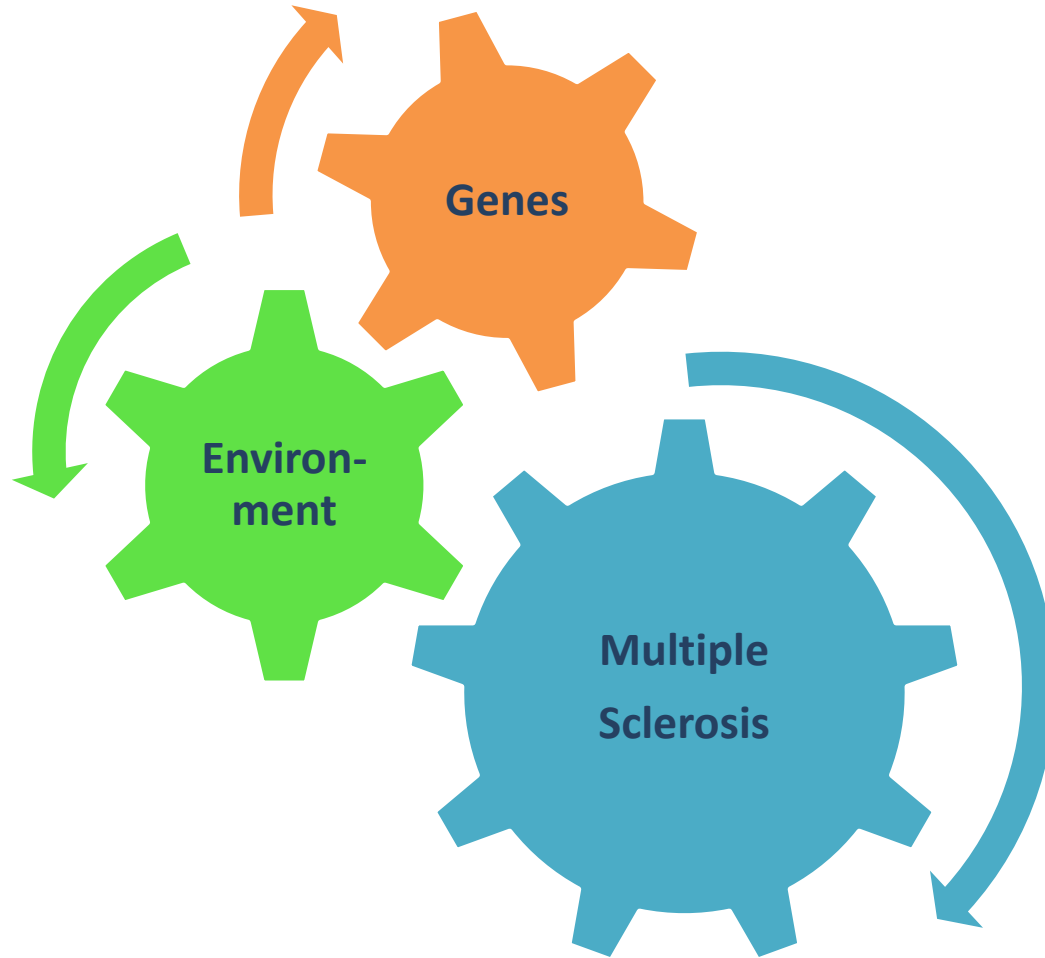
Gavin Giovannoni
Barts and The London



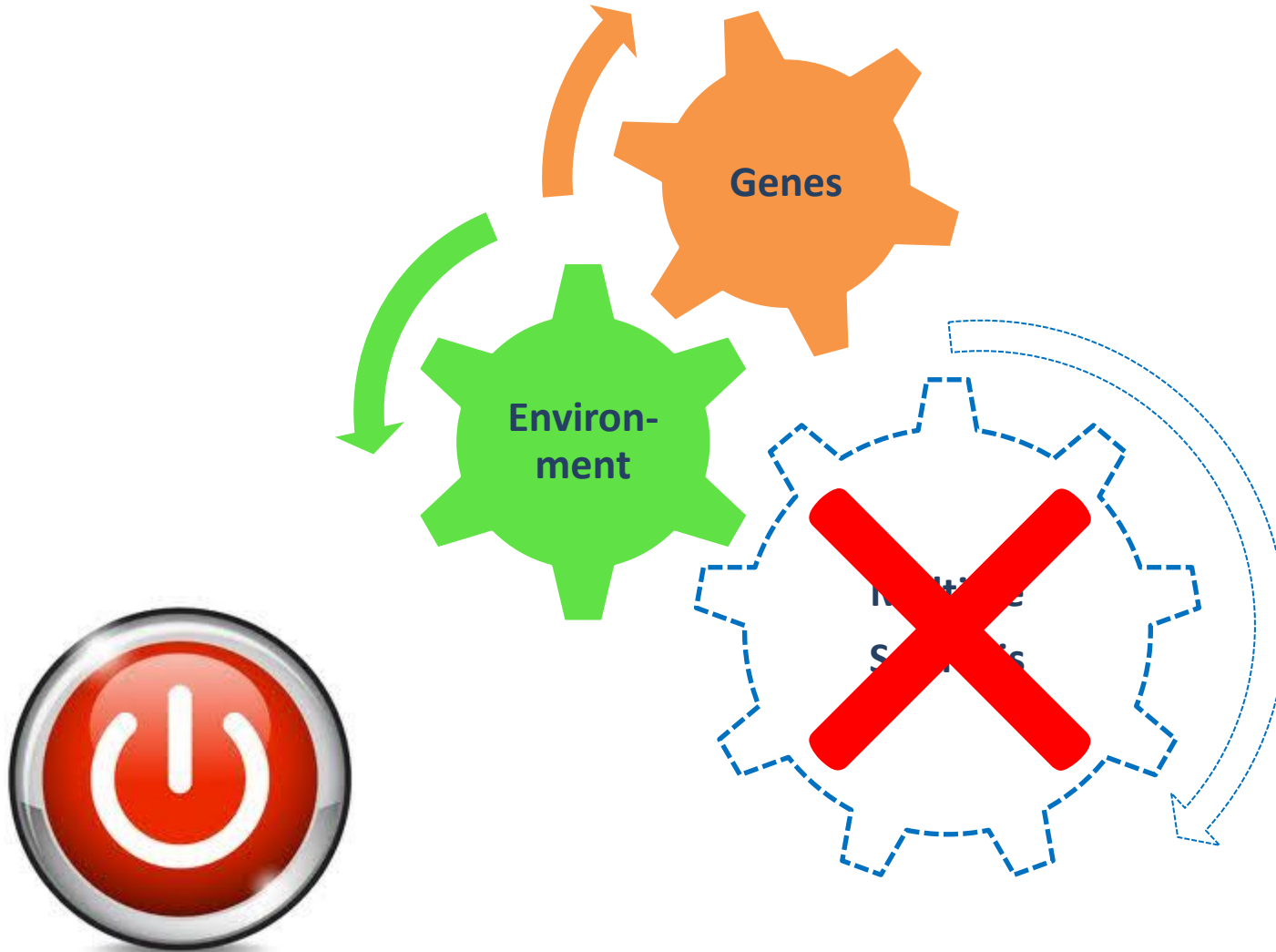
To cure MS do we need to know the cause?



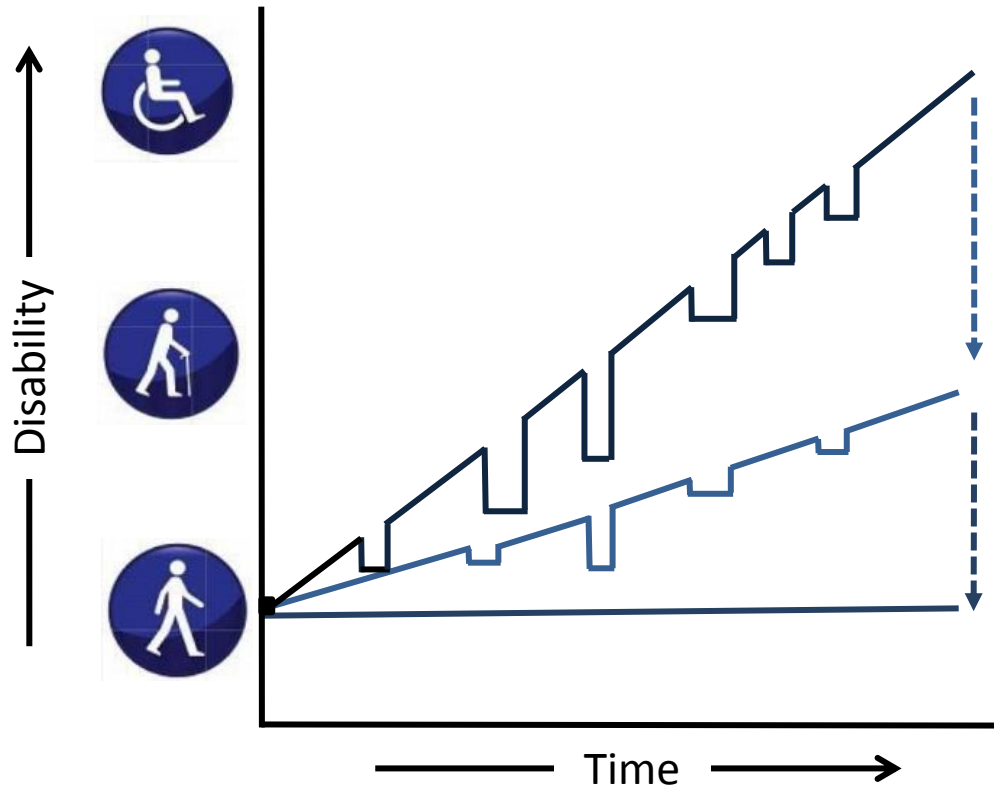
We work on the hypothesis that MS is an autoimmune disease.



The autoimmune hypothesis

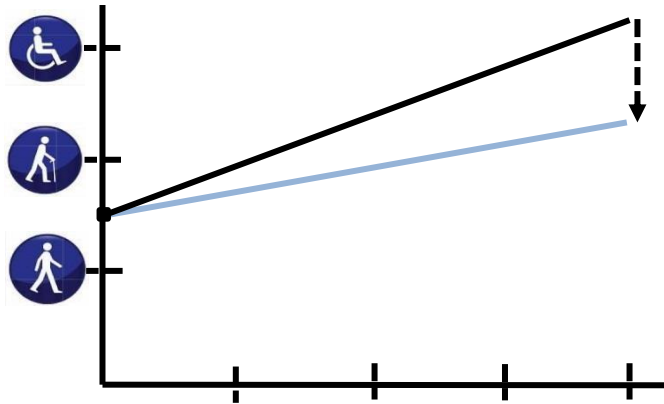


What does a cure mean?

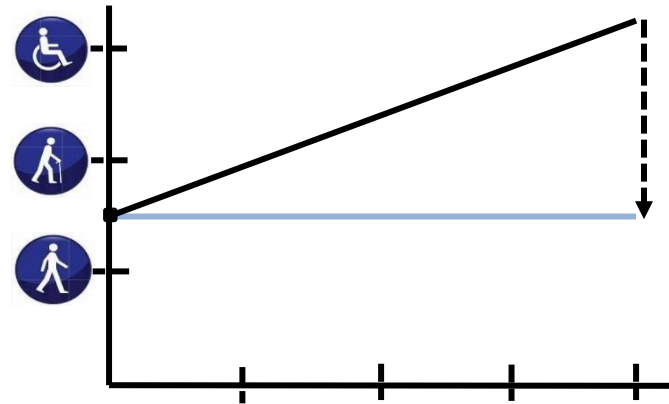


What does a cure mean?

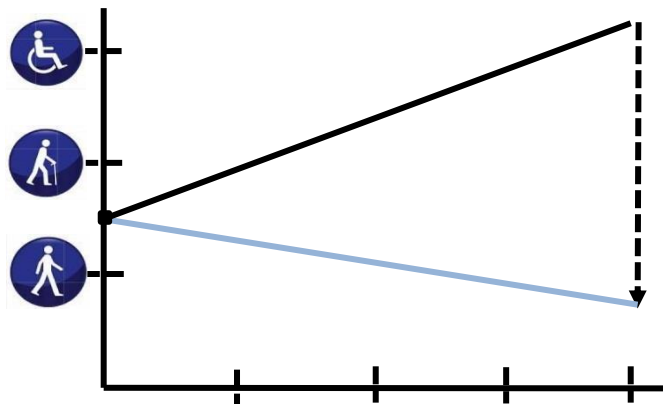
delayed worsening



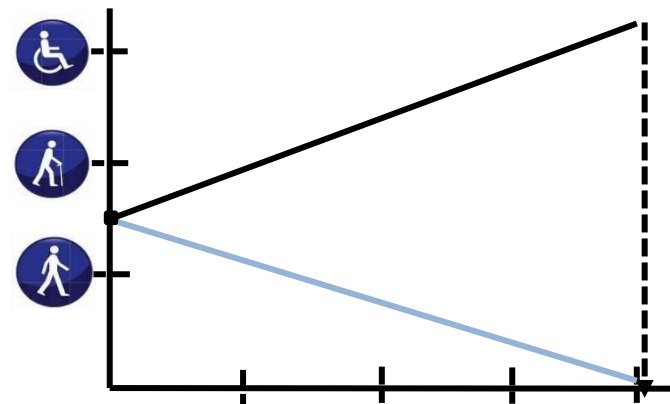
stabilised



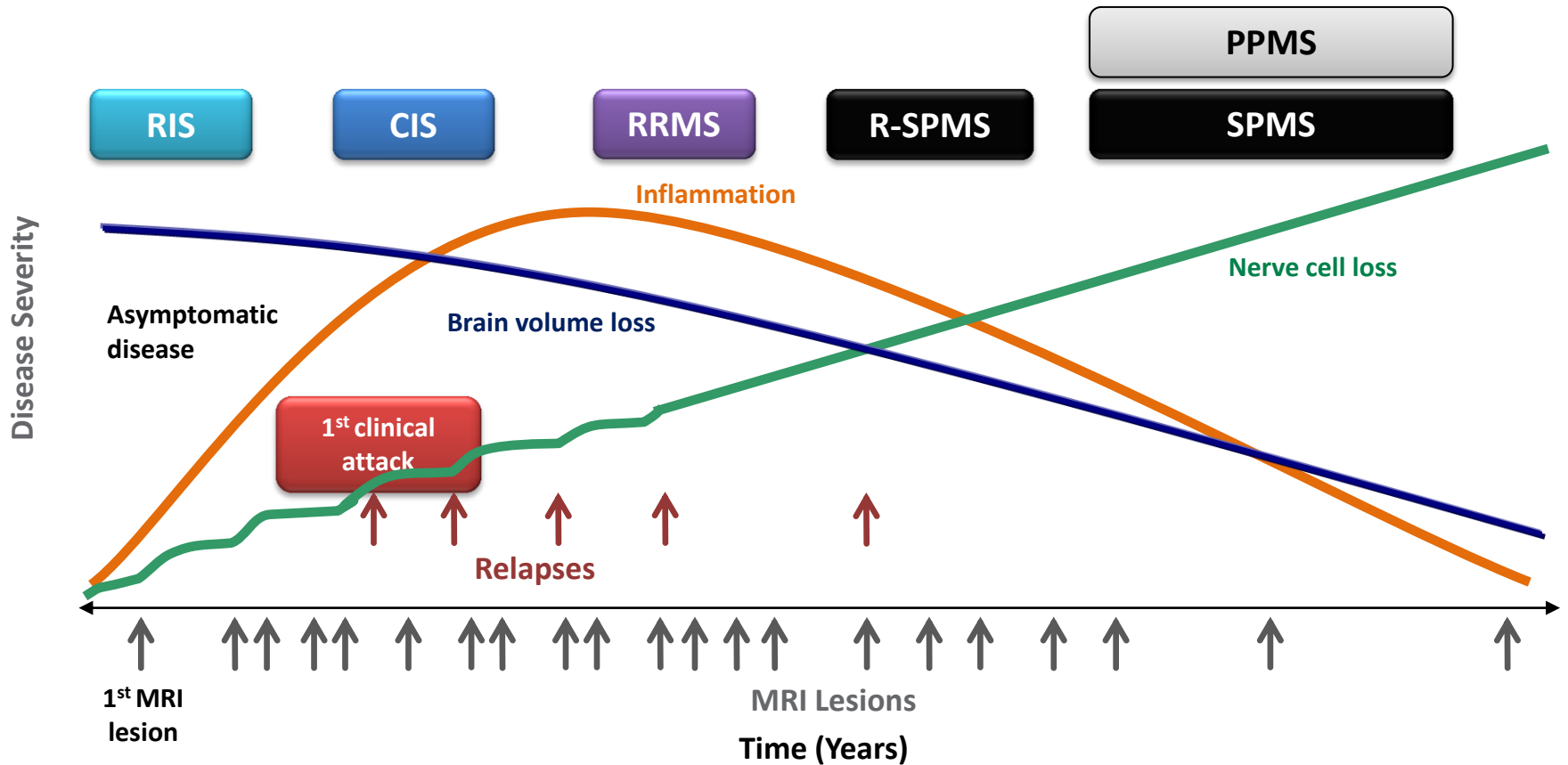
improved function



recovered function



The therapeutic window for recovery



RIS = radiologically isolated syndrome (asymptomatic MS)

CIS = clinically isolated syndrome

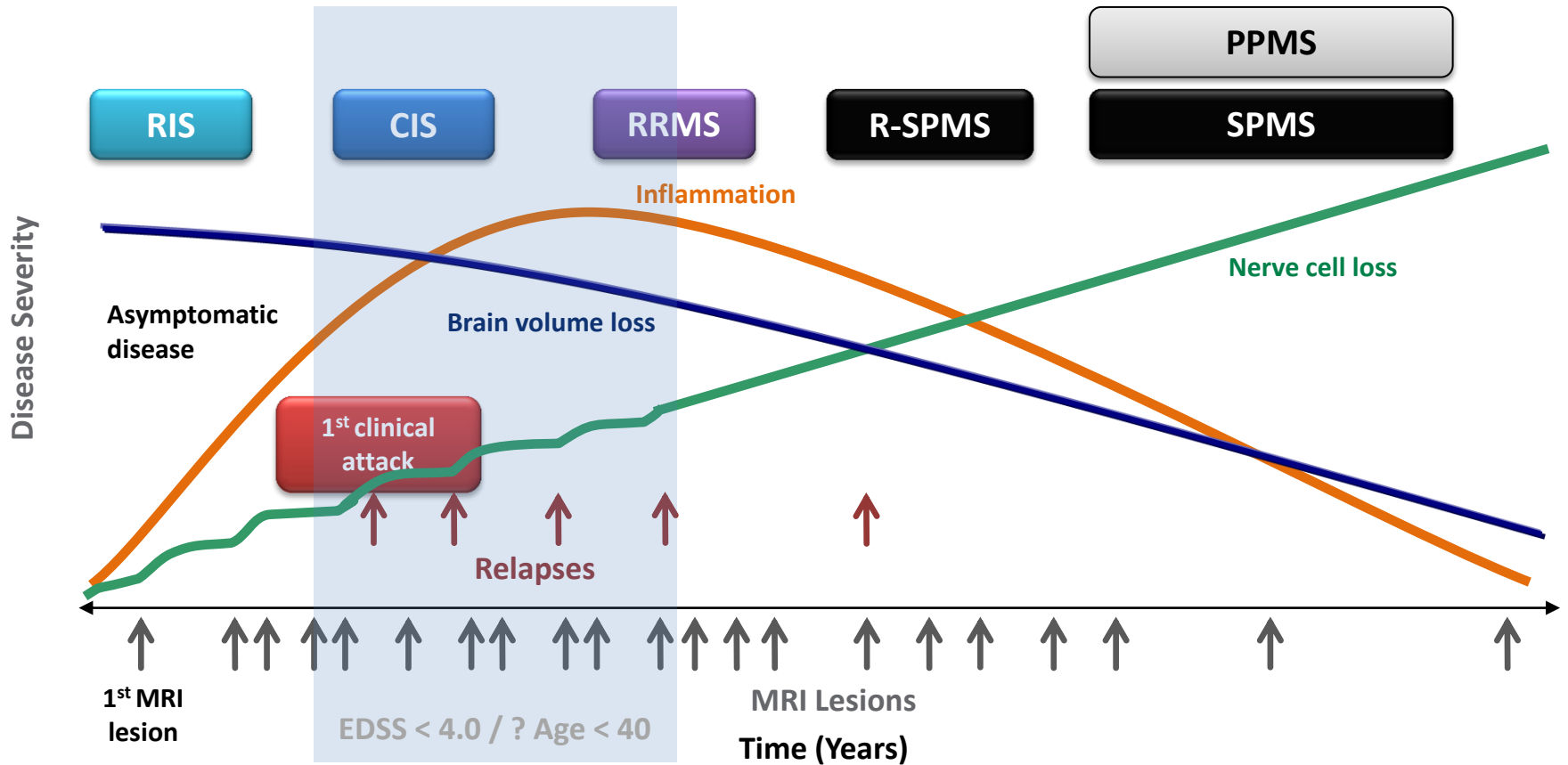
RRMS = relapsing-remitting MS

R-SPMS = relapsing secondary progressive MS

SPMS = secondary progressive MS

PPMS = primary progressive MS

The therapeutic window for recovery



RIS = radiologically isolated syndrome (asymptomatic MS)

CIS = clinically isolated syndrome

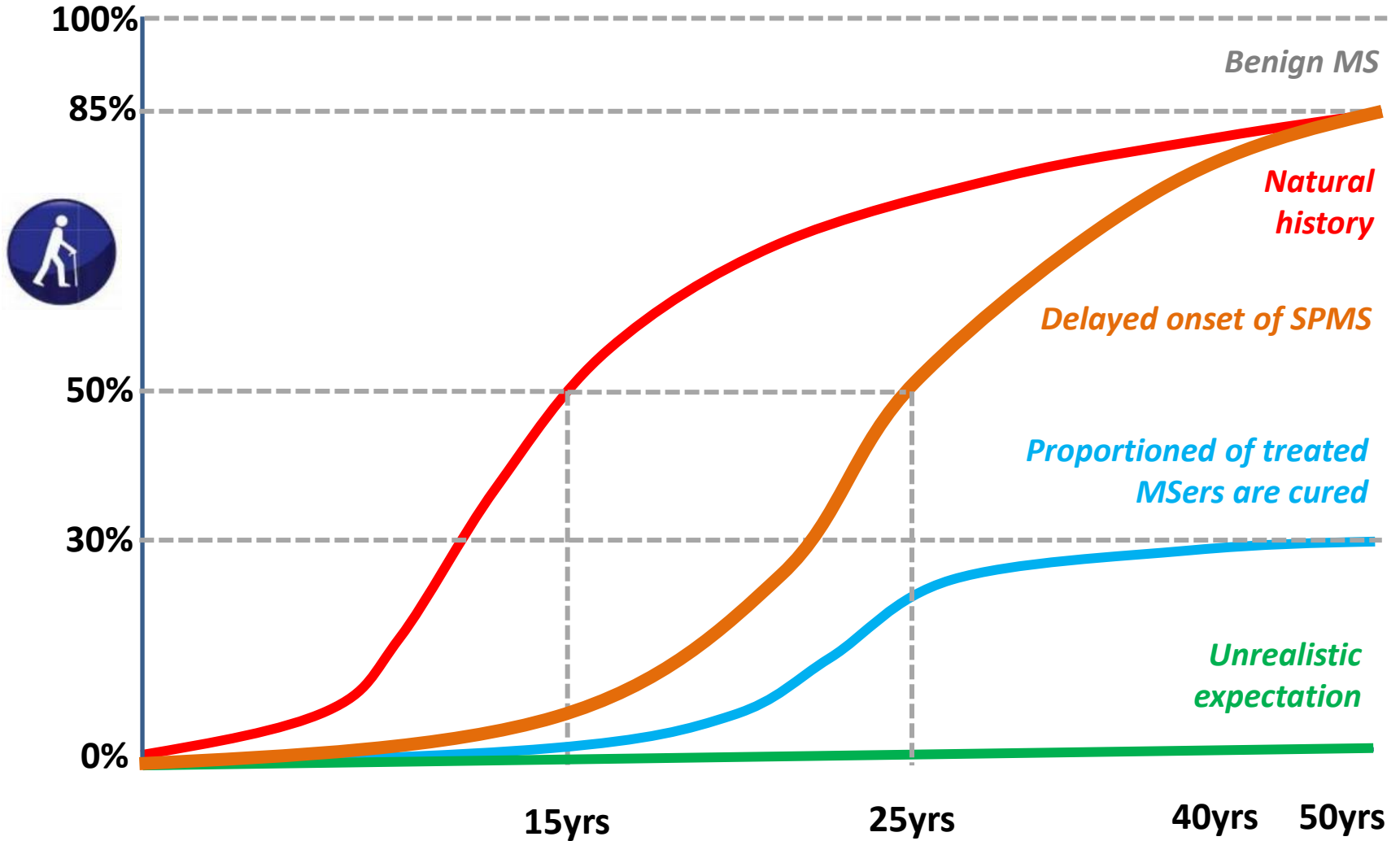
RRMS = relapsing-remitting MS

R-SPMS = relapsing secondary progressive MS

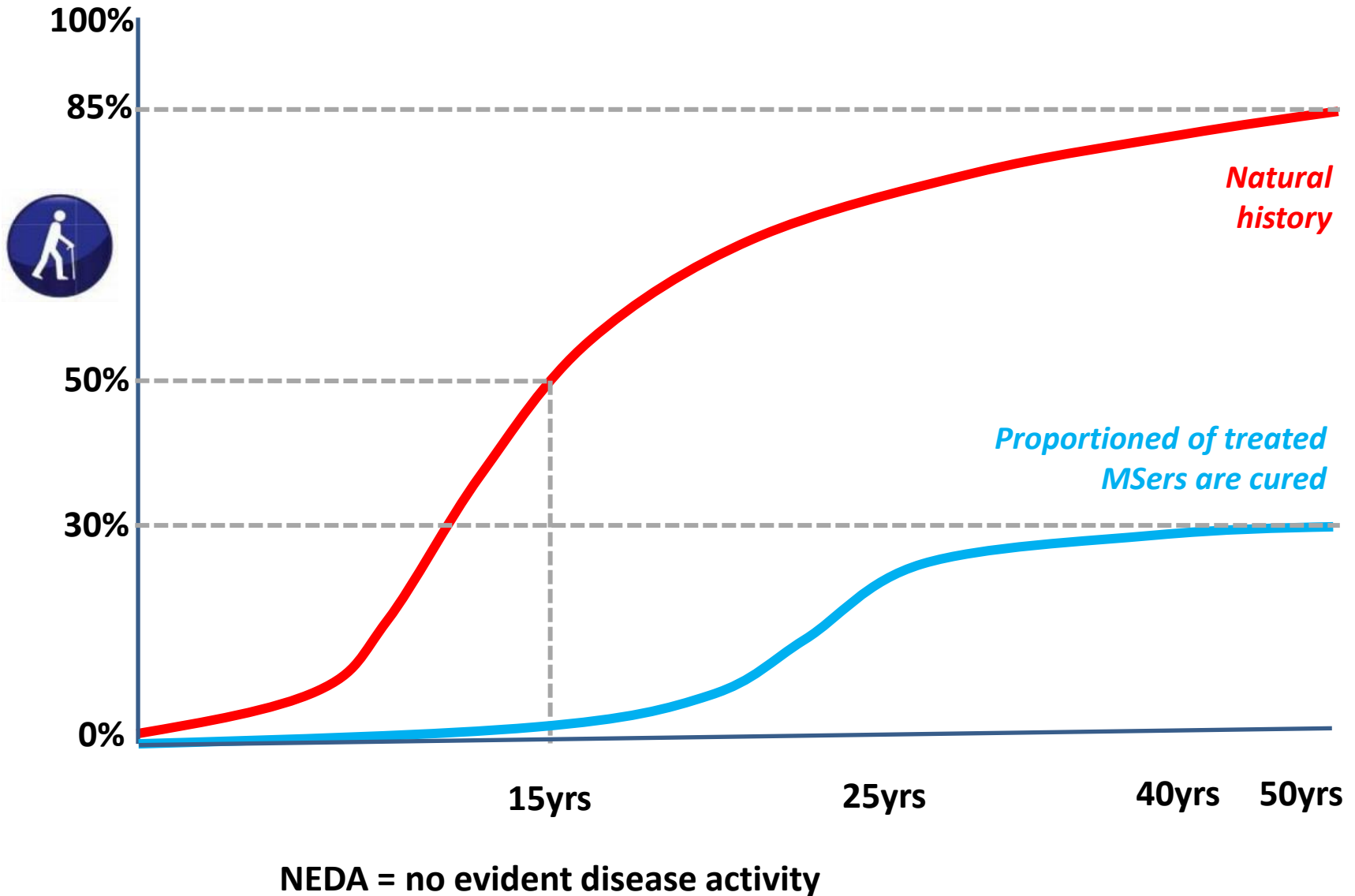
SPMS = secondary progressive MS

PPMS = primary progressive MS

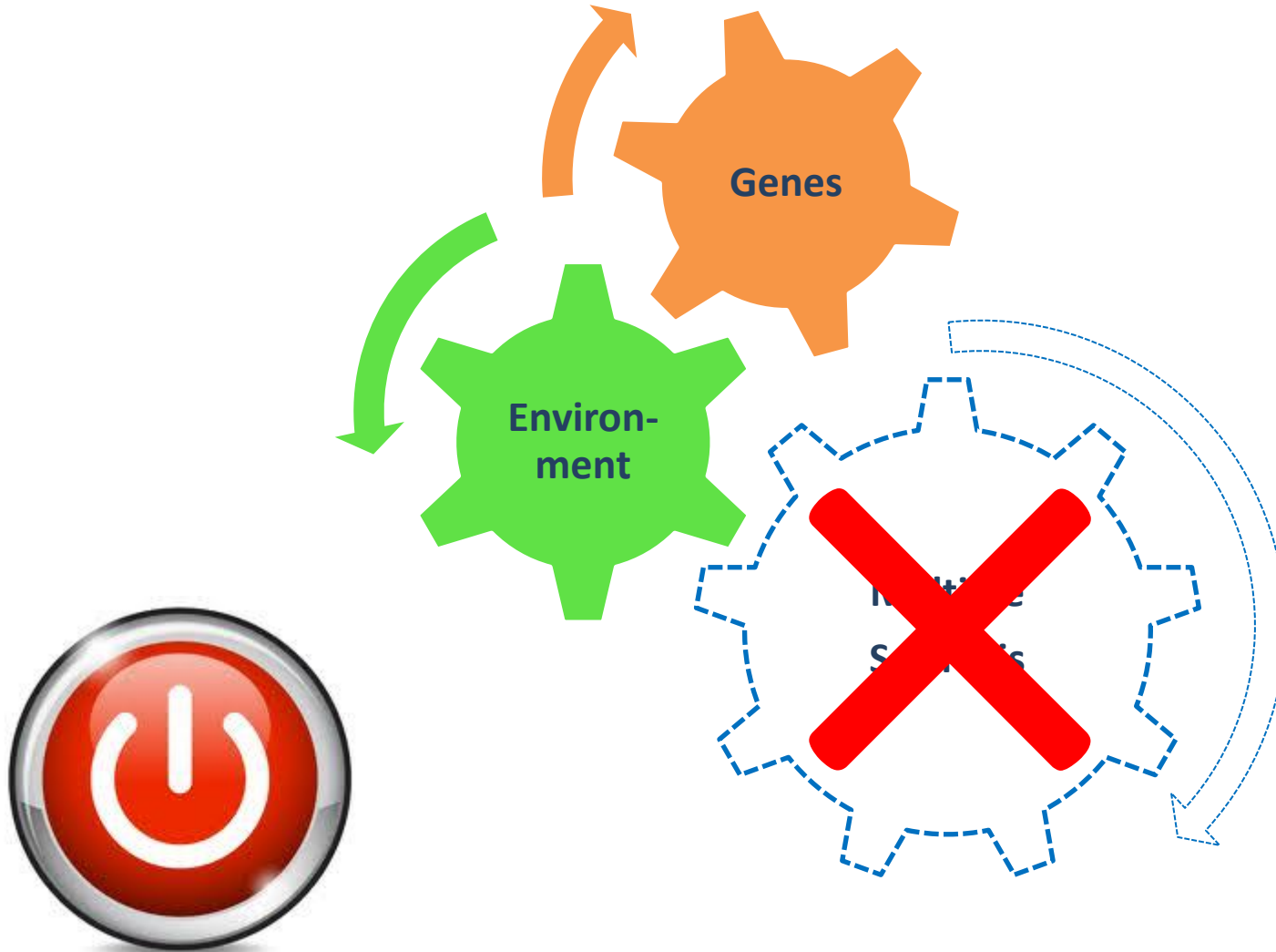
Survival Curves



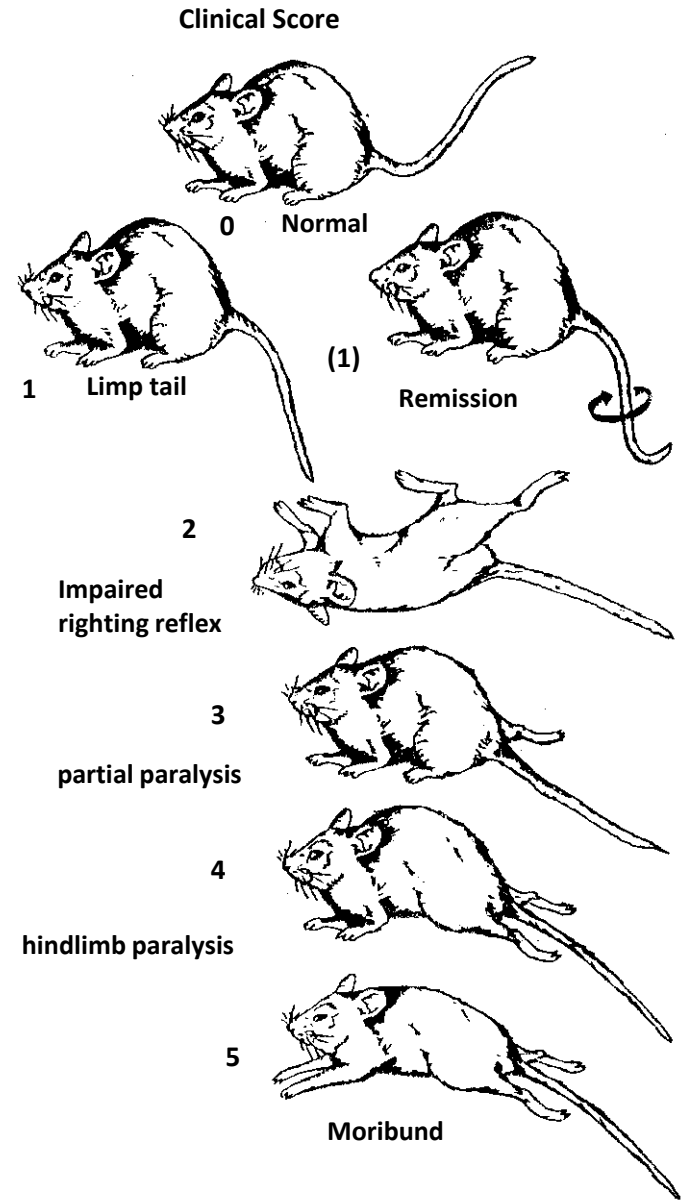
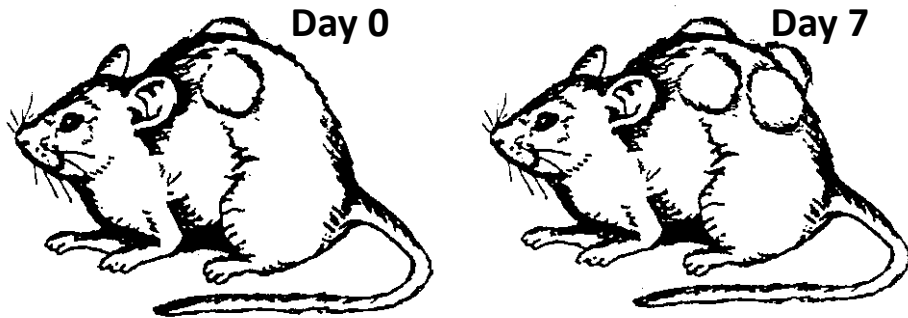
Defining a cure: a working definition



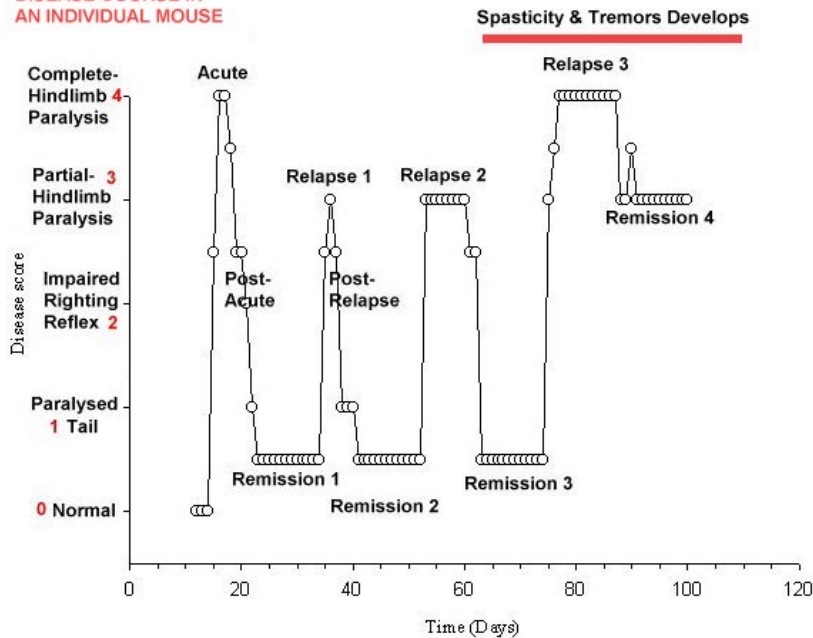
The autoimmune hypothesis



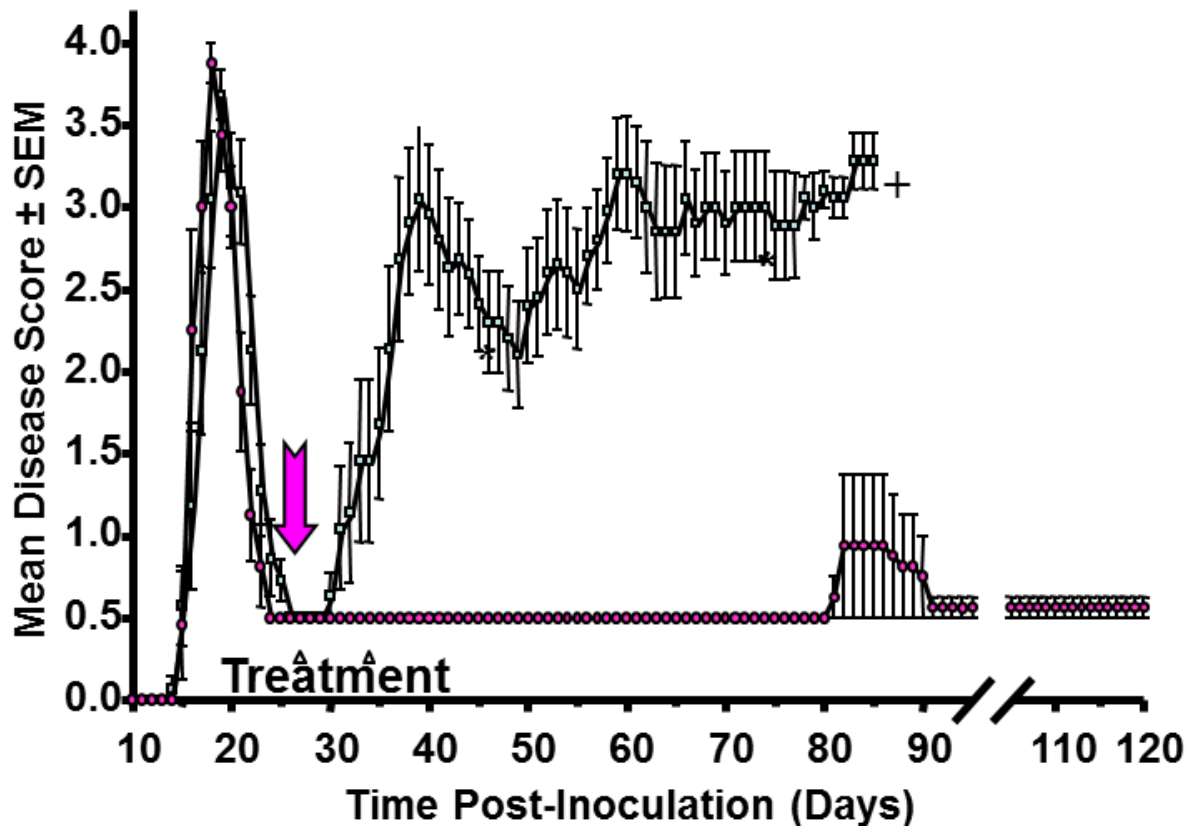
Professor Baker's Animal model of MS



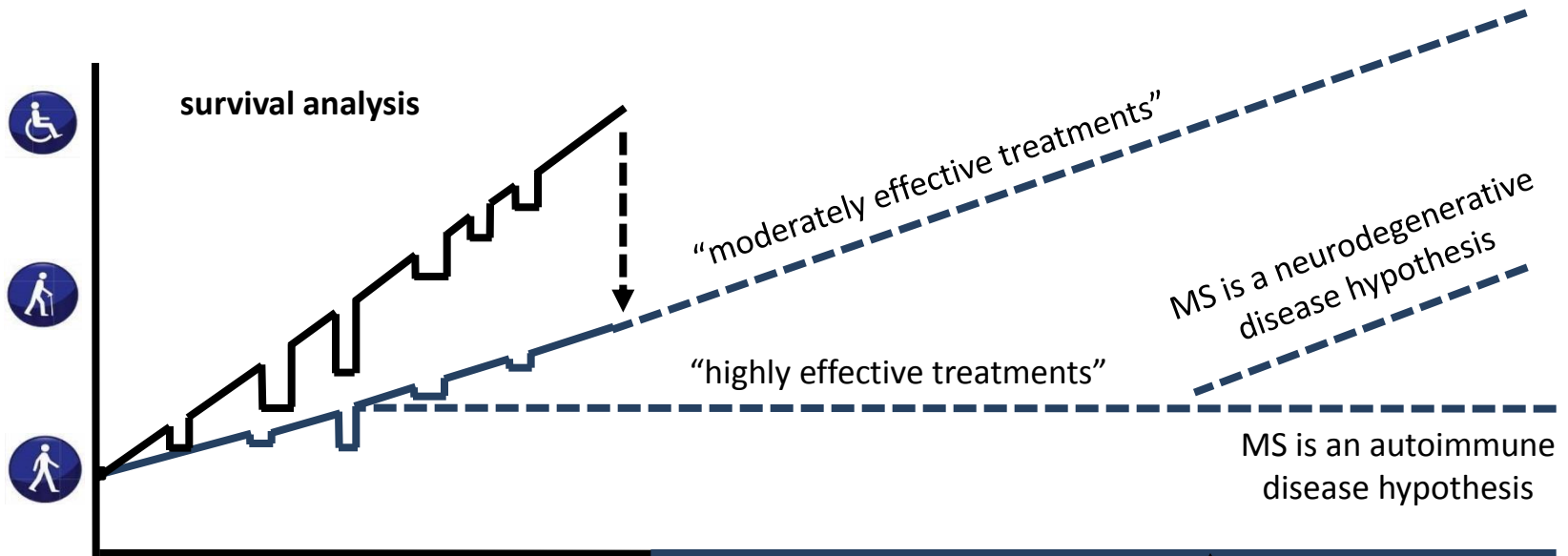
DISEASE COURSE IN AN INDIVIDUAL MOUSE



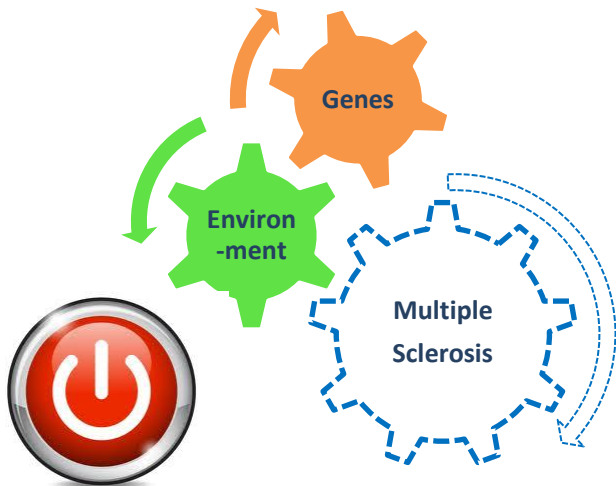
Curing animal MS



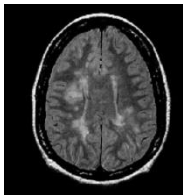
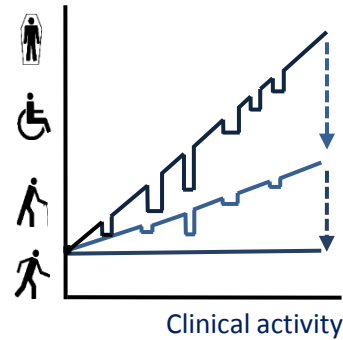
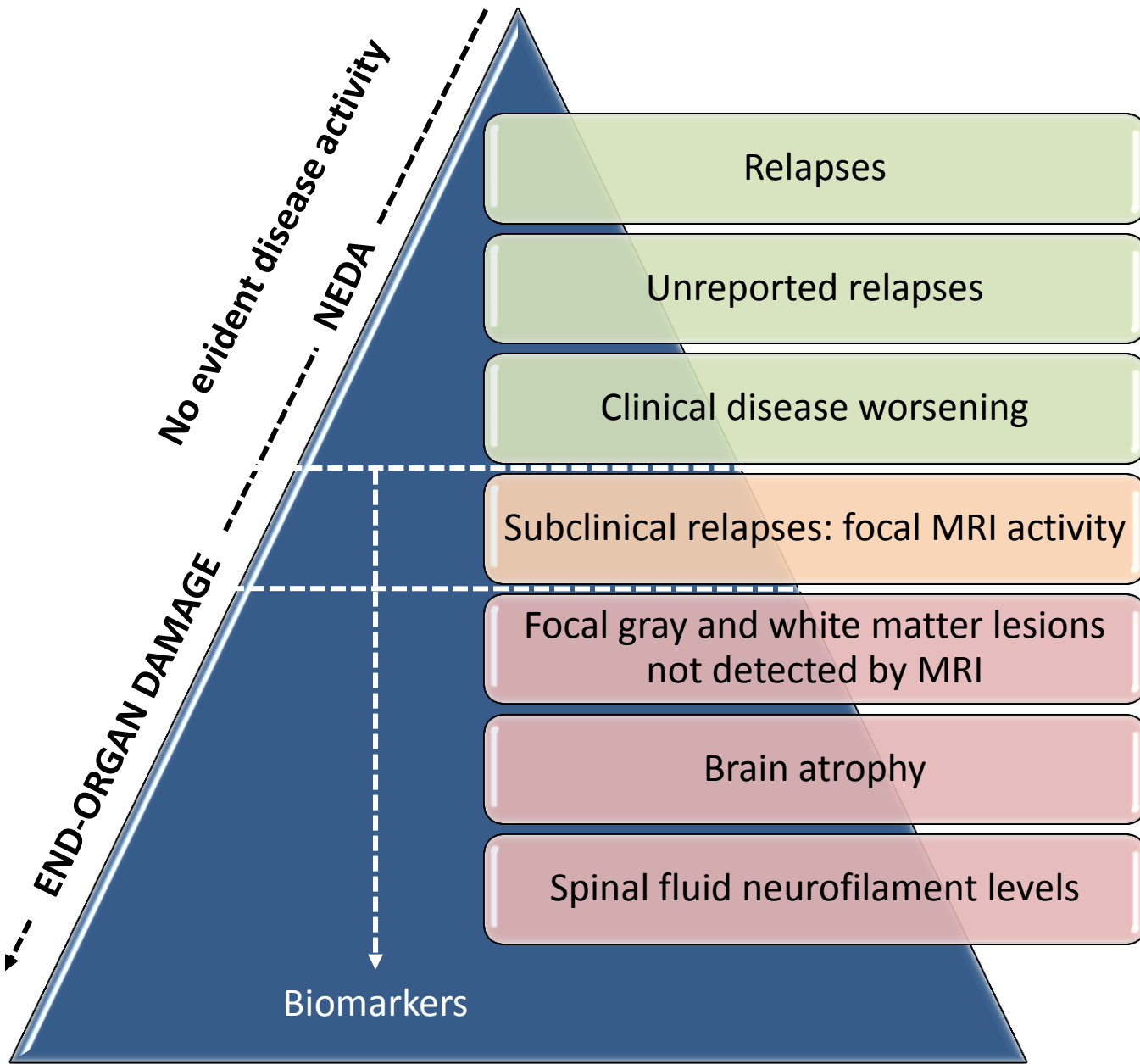
Can we repeat the animal experiment in MS?



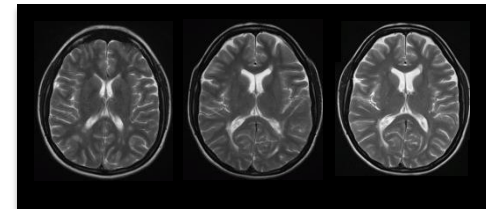
15-20 year
experiment



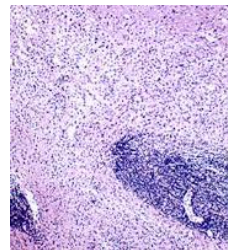
Moving the target: the MS Iceberg



Focal MRI activity



Hidden focal and diffuse MRI activity

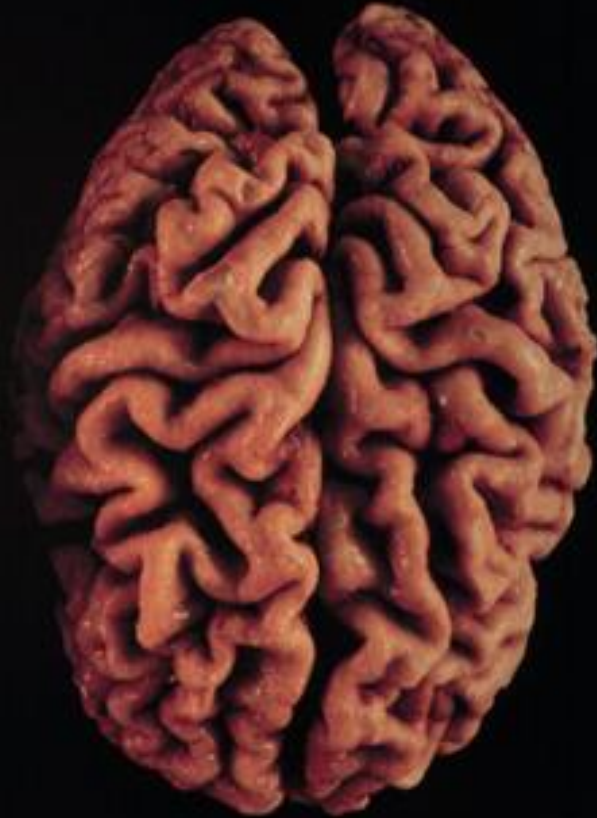


Microscopic or biochemical pathology

Moving the target: end-organ damage



Control



Multiple sclerosis

NEDA

Treat-2-target



No evidence of disease activity defined as:^{1,2}

- × No relapses
- × No sustained worsening of disability
- × No MRI activity
 - × No new or enlarging T2 lesions
 - × No Gd-enhancing lesions

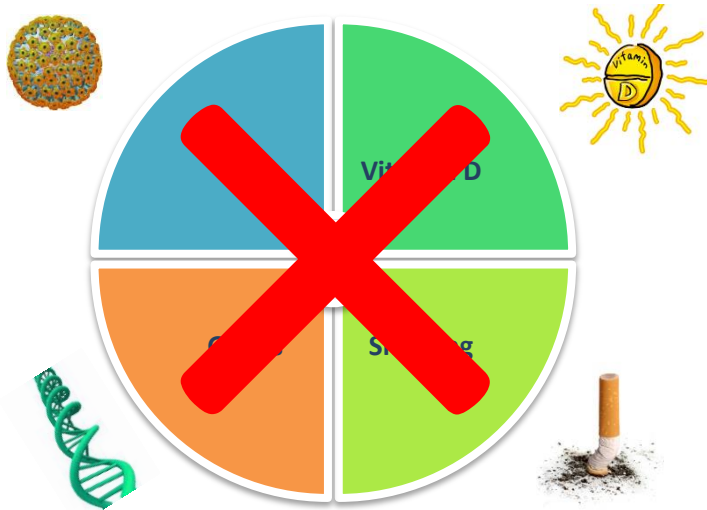
Brain volume loss should be included in our definition for NEDA

Gd, gadolinium.

1. Havrdova E, et al. *Lancet Neurol* 2009; 8:254–260; 2. Giovannoni G, et al. *Lancet Neurol* 2011; 10:329–337.



Have we got it wrong?

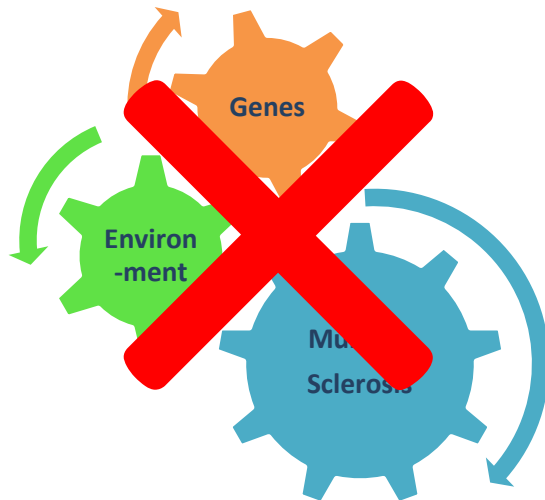


Is MS due to a virus?

Charcot Project

INSPIRE Trial (Raltegravir)

Etc. etc. etc.



Why haven't we cured MS yet?

We may have, we need time to tell, or alternatively a **black swan** may fly in to change the time-line.